



DRAFT ENVIRONMENTAL IMPACT STATEMENT AND DRAFT SECTION 4(f) EVALUATION

APPENDIX 6

Land Use, Zoning, Public Policy, and Property Acquisition

6-1: Potential Property Acquisition



DRAFT ENVIRONMENTAL IMPACT STATEMENT AND DRAFT SECTION 4(f) EVALUATION

APPENDIX 6-1

Potential Property Acquisition

Property Acquisition Required for the Preferred Alternative

PROPERTY ACQUISITION REQUIRED FOR THE PREFERRED ALTERNATIVE

Surface Right-of-Way																
Location	Block	Lot #	Lot Area		Zoning	Class	Owner	Land Assmnt	Building Assmnt	Total Assmnt	Permanent Easement		Temporary Easement		Project Activity	Use
			Sq. Feet	Acre							Sq. Feet	Acre	Sq. Feet	Acre		
Secaucus	44	2 (= 2 & 4 in njsea)	973,566	22.350	Light Industrial A	Industrial	N/F County Road, LLC	\$2,779,300		\$2,779,300	67125.96	1.541	9888.12	0.227	Installation of retaining wall & piles. Vehicular accessway to access stairs	Warehouses
Secaucus	44	5.04	535,788	12.300	Light Industrial A	Industrial	N/F 801 Penhorn Avenue, LLC	\$1,000,000	\$5,193,000	\$6,193,000	21649.32	0.497	6534.00	0.15	Installation of piles for retaining wall, and drainage system pipes, manholes, catch basins. Vehicular accessway to access stairs	Warehouses
Secaucus	47	4.08 (= 4.05 in njsea)	161,172	3.700	Light Industrial A	Industrial	PANTHEON-JP PROPS IV LLC	\$831,800	\$2,798,000	\$3,629,800	3136.32	0.072	1611.72	0.037	Installation of piles for retaining wall, and site drainage system of pipes, manholes, catch basins. Vehicular accessway to access stairs	Warehouses
Secaucus	47	3.01	138,782	3.200	Light Industrial A	Industrial	N/F 301 Penhorn Avenue, LLC	\$717,800	\$2,132,200	\$2,850,000	4443.12	0.102	1742.40	0.04	Installation of piles for retaining wall, and site drainage system of pipes, manholes, catch basins. Vehicular accessway to access stairs	Warehouses
Secaucus	47	2.01	142,528	3.272	Light Industrial A	Industrial	N/F Pantheon-JH Properties II, LLC	\$735,800	\$1,796,700	\$2,532,500	7710.12	0.177	3702.60	0.085	Installation of piles for retaining wall, and drainage swale. Vehicular accessway to access stairs	Warehouses
North Bergen	449.01	1.02	78,408	1.800	NJ MC Zoning	Industrial	Keystone Freight Corp.	\$471,000		\$471,000	2134.44	0.049			Installation of access road and drainage culvert box	Warehouses
North Bergen	449.01	1	451,804	10.400	NJ MC Zoning	Industrial	N/F 2820 16th St. Realty Assoc., LLC	\$2,811,600	\$97,000	\$2,908,600	20865.24	0.479	1960.20	0.045	Installation of access road and drainage culvert box	Warehouses
North Bergen	449.01	4	2,098,111	48.166	NJ MC Zoning	Commercial	Ogden Realty II	\$4,816,600	\$394,600	\$5,211,200	176592.24	4.054	63815.40	1.465	Installation of embankments, access road and cross culverts	Warehouses
North Bergen	442	1.01	494,842	11.360	NJ MC Zoning	Railroad Class 1	Pennsylvania Tunnel and Terminal Railroad Company	No Tax Record			18295.20	0.42	696.96	0.016	Installation of bridge structure, tracks, embankment, cross culvert	Railroads
North Bergen	442	1.09	409,028	9.390	NJ MC Zoning	Railroad Class 1	Pennsylvania Tunnel and Terminal Railroad Company	No Tax Record			18992.16	0.436	56018.16	1.286	Installation of bridge structure, tracks, embankment, cross culvert, permanent access road and temporary haul road	Railroads
North Bergen	485	1	247,856	5.690	NJ MC Zoning	Other Exempt	CONRAIL-NORTHERN RR, NJ (FORMERLY ERIE RR)	\$1,138,000		\$1,138,000	6403.32	0.147	7230.96	0.166	Installation of a bridge structure	Railroads
North Bergen	486	1	335,412	7.700	NJ MC Zoning	Railroad Class 1	CONRAIL-NORTHERN RR, NJ (FORMERLY ERIE RR)	No Tax Record			6446.88	0.148	3528.36	0.081	Installation of a bridge structure	Railroads
North Bergen	35	5.031	480,902	11.040	NJ MC Zoning	Other Exempt	NEW JERSEY TRANSIT CORP	\$2,208,000	\$3,770,000	\$5,978,000					Installation of bridge structures, tracks, embankment. Construction staging area	Surface
North Bergen	35	5.03	115,913	2.661	NJ MC Zoning	Other Exempt	NEW JERSEY TRANSIT CORP	\$798,300	\$1,024,000	\$1,822,300					Construction staging area	Surface
North Bergen	Tonnelle Avenue						STATE OF NEW JERSEY DOT (Tonnelle Avenue)	No Tax Record			11238.48	0.258			Installation of underpass structure and embankment	Surface
North Bergen	27	41	24,829	0.570	Industrial	Other Exempt	NEW JERSEY TRANSIT CORP	\$210,400	\$554,600	\$765,000					Installation of underpass structure and U-wall structure	Surface
North Bergen	27	42	15,978	0.396	Industrial	Other Exempt	NEW JERSEY TRANSIT CORP	\$146,800		\$146,800					Installation of underpass structure and U-wall structure. Construction staging area.	Surface

PROPERTY ACQUISITION REQUIRED FOR THE PREFERRED ALTERNATIVE

Surface Right-of-Way																
Location	Block	Lot #	Lot Area		Zoning	Class	Owner	Land Assmnt	Building Assmnt	Total Assmnt	Permanent Easement		Temporary Easement		Project Activity	Use
			Sq. Feet	Acre							Sq. Feet	Acre	Sq. Feet	Acre		
Manhattan	675	1	104,675	2.403	Industrial/ Manufacturing	Misc. Warehouse	260 TWELFTH AVENUE HOLDINGS LLC	\$4,393,800		\$11,445,000 (Est. Market Value)	104674.68	2.403			Location of fan plant and construction staging area	NYC
Manhattan	675	12	41,969	0.963	Industrial	Car Wash	West Side 11th & 29th LLC	\$2,826,399		\$11,668,000 (Est. Market Value)			-28749.60	-0.660	Construction staging area	NYC

Shaded Row Signifies Parcels Owned By NJ TRANSIT, State of New Jersey DOT, or Port Authority - these parcels not included in parcel count

NOTE: Source of Data from <http://www.njpropertyrecords.com/index.php> and <http://nycprop.nyc.gov/nycproperty/nynav/jsp/selecttbl.jsp>. Secondary sources are indicated:
 njsea = New Jersey Sports and Exposition Authority website: www.njsea.com, Interactive Municipal Maps
 njpam = New Jersey Property Acquisition Map, updated as of 05/24/2017 NJ TRANSIT Capital Planning
 snjtc= State of New Jersey Transparency Center, Updated as of 05/24/2017. Website: http://njgin.state.nj.us/oit/gis/NJ_TaxListSearch/

Underground Easement								
Location	Block	Lot #	Lot Area		Zoning	Class	Owner	Project Activity
			Sq. Feet	Acre				
North Bergen	44	1	22,651	0.520		Vacant Land	N/F 2102 Realty, LLC	Placement of tunnels over 60' below surface
North Bergen	44	9	33,600	0.771		Commercial	PSE & G % N FIERRO	Placement of tunnels over 60' below surface
North Bergen	45.01	1	0			Residential	MAC MAC PROPERTY, LLC	Placement of tunnels over 60' below surface
North Bergen	43	33	544	0.012		Vacant Land	RUEDA, GENOVEVA F & CARLOS	Placement of tunnels over 60' below surface
North Bergen	43	34	1,564	0.036		Residential	MACHADO, WALTER R	Placement of tunnels over 60' below surface
North Bergen	43	36	2,900	0.067		Residential	RUEDA, GENOVEVA & CARLOS A	Placement of tunnels over 60' below surface
North Bergen	43	48	5,500	0.126		Commercial	F AND Y COMPANY	Placement of tunnels over 60' below surface
North Bergen	43	49	2,975	0.068		Residential	COLLAZO, JOSE F & ROSA M	Placement of tunnels over 60' below surface
North Bergen	43	50	2,975	0.068		Residential	ESCALERA, WANDA I & SANTOS, ELADIA	Placement of tunnels over 60' below surface
North Bergen	43	51	2,975	0.068		Residential	SANCHEZ, SONIA & PAUL F CERNA	Placement of tunnels over 60' below surface
North Bergen	43	52	5,950	0.137		Residential	QUINTANILLA, ROSELIA	Placement of tunnels over 60' below surface
North Bergen	43	53	4,522	0.104		Residential	1118 21ST ST LLC	Placement of tunnels over 60' below surface
North Bergen	40	23	5,150	0.118		Commercial	LAWFLASH LLC	Placement of tunnels over 60' below surface
North Bergen	40	24	1,776	0.041		Residential	DULANY, CAROLE / TESTAMENTARY TRUST	Placement of tunnels over 60' below surface
North Bergen	40	25	1,989	0.046		Residential	MAGDA L AMARGOS	Placement of tunnels over 60' below surface
North Bergen	40	26	2,108	0.048		Residential	SHAH, NIKESH	Placement of tunnels over 60' below surface
Union City	106	1 (1-10, 49-60)	50,094	1.150		Commercial	LEVIN PROPERTIES % LEVIN MGMT	Placement of tunnels over 60' below surface
Union City	106	38 (38-46)	30,360	0.697		Commercial	LEBER FUNERAL HOME %SCI MAGMT CORP	Placement of tunnels over 60' below surface
Union City	106	25 (25-28)	25,800	0.592		Industrial	2007 KERRIGAN AVE LLC	Placement of tunnels over 60' below surface
Union City	106	29	3,100	0.071		Residential	VETTER, LOUIS R & HILDA E	Placement of tunnels over 60' below surface
Union City	106	30	3,100	0.071		Residential	NOTRE, ANNA C, & SHERIDAN, HELEN M.	Placement of tunnels over 60' below surface
Union City	106	31	2,700	0.062		Residential	FERRERAS, YESENIA & PORTILLO, MARIA	Placement of tunnels over 60' below surface
Union City	106	32	2,288	0.053		Residential	TOFT, HEZEKIAH JAMES	Placement of tunnels over 60' below surface
Union City	106	33	2,403	0.055		Residential	LUZURIAGA, CESAR & LAURA M	Placement of tunnels over 60' below surface
Union City	106	34	2,338	0.054		Residential	PINEDO, LUZ LILY & RICARDO	Placement of tunnels over 60' below surface
Union City	106	35	2,336	0.054		Residential	CHEN, SHINCHIH & JIHONG SUN	Placement of tunnels over 60' below surface
Union City	106	36	2,335	0.054		Residential	SANTOS, MARIA MARGARITA	Placement of tunnels over 60' below surface
Union City	106	37	2,464	0.057		Residential	MESSINA, A J & BEATRIZ ESTEBAN	Placement of tunnels over 60' below surface
Union City	106	61 (22-24)	21,976	0.504		Commercial	LORGIA LLC	Placement of tunnels over 60' below surface
Union City	105	5	3,300	0.076		Residential	VON CAPPELN, AMELIA	Placement of tunnels over 60' below surface

Underground Easement								
Location	Block	Lot #	Lot Area		Zoning	Class	Owner	Project Activity
			Sq. Feet	Acre				
Union City	105	6	3,125	0.072		Residential	NARANJO, RAMIRO & MARY	Placement of tunnels over 60' below surface
Union City	105	7	2,775	0.064		Residential	FERNANDEZ, ALFREDO A & DOLORES M	Placement of tunnels over 60' below surface
Union City	104	20	2,184	0.050		Residential	ALARCON, MARIO & DARINA ALARCON	Placement of tunnels over 60' below surface
Union City	104	21	2,188	0.050		Residential	ROMERO, M C & R A & A M	Placement of tunnels over 60' below surface
Union City	104	22-23	9,537	0.219		Church & Charitable Property	7TH DAY ADVENTCH % A DEBBIES	Placement of tunnels over 60' below surface
Union City	104	24	2,366	0.054		Residential	TORRES, ANDRES & VIRGINIA	Placement of tunnels over 60' below surface
Union City	104	25	2,300	0.053		Residential	BALLADARES, L & A & J ANDALUZ	Placement of tunnels over 60' below surface
Union City	104	26	2,325	0.053		Residential	DALEMA CORP	Placement of tunnels over 60' below surface
Union City	104	27	2,338	0.054		Apartment	822 19TH STREET UNION CITY LLC	Placement of tunnels over 60' below surface
Union City	104	28	2,409	0.055		Residential	CALDERON, MARCO & MARIA	Placement of tunnels over 60' below surface
Union City	104	29	2,400	0.055		Residential	ISOLA, JOSEPH & ROSITA	Placement of tunnels over 60' below surface
Union City	104	30	2,400	0.055		Residential	PEREZ, EDWIN & WANDA	Placement of tunnels over 60' below surface
Union City	104	31	2,500	0.057		Residential	ORTEZ, JOSE & ORBELINA	Placement of tunnels over 60' below surface
Union City	104	32	2,500	0.057		Residential	CALDERON, MERCEDES	Placement of tunnels over 60' below surface
Union City	104	1 (1-4, 33)	12,500	0.287		Vacant Land	1901 SUMMIT AVE LLC % DEMATTHEIS	Placement of tunnels over 60' below surface
Union City	97	13	2,800	0.064		Apartment	PRIDA, ELENA % GONZALEZ-ACTION	Placement of tunnels over 60' below surface
Union City	97	14	2,600	0.060		Residential	BEEPAT, ERIC & ROSEMARY	Placement of tunnels over 60' below surface
Union City	97	15	2,225	0.051		Commercial	1815 SUMMIT ASSOCS LLC	Placement of tunnels over 60' below surface
Union City	97	16	2,227	0.051		Residential	CALYECA, JUAN & TERESA	Placement of tunnels over 60' below surface
Union City	97	17	2,241	0.051		Residential	SHAWKY F FARAG	Placement of tunnels over 60' below surface
Union City	97	18	2,300	0.053		Residential	VALDES, MOISES & ROSA	Placement of tunnels over 60' below surface
Union City	108	1.04	229,126	5.260		Public School Property	UNION CITY BOARD OF EDUCATION	Placement of tunnels over 60' below surface
Union City	93	21	3,550	0.081		Residential	DIAZ, JAY R & GIOVANNI	Placement of tunnels over 60' below surface
Union City	93	22-23	0			Residential	18TH ST PARTNERSHIP	Placement of tunnels over 60' below surface
Union City	93	24	3,600	0.083		Residential	PEREZ, SILVESTRE & ANA	Placement of tunnels over 60' below surface
Union City	93	25	3,744	0.086		Residential	RINALDI, LEONARDO & CLARA	Placement of tunnels over 60' below surface
Union City	93	26	2,121	0.049		Residential	DURAN, SERGIO LUIS	Placement of tunnels over 60' below surface
Union City	93	27	2,118	0.049		Residential	KYDD, M. & T. % STEPHANIE K. DONDERO	Placement of tunnels over 60' below surface
Union City	93	28	2,114	0.049		Residential	TORRENS, ALEJANDRINA	Placement of tunnels over 60' below surface
Union City	93	29	2,111	0.048		Residential	LENG, SHEYLA & REYNA, JULIO	Placement of tunnels over 60' below surface

Underground Easement								
Location	Block	Lot #	Lot Area		Zoning	Class	Owner	Project Activity
			Sq. Feet	Acre				
Union City	93	30	2,100	0.048		Residential	QIN, LEI	Placement of tunnels over 60' below surface
Union City	93	31	2,100	0.048		Residential	BEAZ, GERMAN	Placement of tunnels over 60' below surface
Union City	92	4	1,674	0.038		Residential	CARCAMO, CARLOS	Placement of tunnels over 60' below surface
Union City	92	5	1,673	0.038		Residential	VILCHEZ, NYDIA	Placement of tunnels over 60' below surface
Union City	92	6 & 7	7,900	0.181		Residential	MARTIN, JUANA & ROSS, MARY	Placement of tunnels over 60' below surface
Union City	92	8	3,925	0.090		Residential	MARQUEZ, JOSE E & ANA	Placement of tunnels over 60' below surface
Union City	92	9	3,925	0.090		Residential	GERRITY, MITCHELL D & SCOTT A	Placement of tunnels over 60' below surface
Union City	92	10	5,545	0.127		Residential	PIZARROSO, JUAN & MIRIAM	Placement of tunnels over 60' below surface
Union City	92	11-12	5,580	0.128		Residential	CONTRERAS, MIGUEL E & ANA	Placement of tunnels over 60' below surface
Union City	92	14	2,151	0.049		Residential	MINGIONE, A. EST. %V ITTORIO DEBELLIS	Placement of tunnels over 60' below surface
Union City	92	15	2,150	0.049		Residential	OROZCO, FRANCES & LILLIAN	Placement of tunnels over 60' below surface
Union City	92	16	2,150	0.049		Residential	GOMEZ, EUGLOGIA & ABRAHAM & LUCIANO	Placement of tunnels over 60' below surface
Union City	92	17	2,133	0.049		Residential	ZAMBAS, PANAYIOTIS	Placement of tunnels over 60' below surface
Union City	92	18	2,128	0.049		Residential	MARTINEZ, ERICK	Placement of tunnels over 60' below surface
Union City	92	19	2,131	0.049		Residential	PONCE, RAFAEL & SALLIE A.	Placement of tunnels over 60' below surface
Union City	92	20	2,150	0.049		Residential	VALDEZ, ARMANDO	Placement of tunnels over 60' below surface
Union City	92	21	1,675	0.038		Residential	ALVARDO, FAUSTO	Placement of tunnels over 60' below surface
Union City	85	23	2,500	0.057		Residential	QUINONES, XIOMARA	Placement of tunnels over 60' below surface
Union City	85	24-25	4,700	0.108		Residential	RODRIGUEZ, RAFAEL & MARIA	Placement of tunnels over 60' below surface
Union City	85	26	1,800	0.041		Residential	ALLEN, KAREN	Placement of tunnels over 60' below surface
Union City	85	27	1,216	0.028		Commercial	TAMAYO, JOSE M ET UX	Placement of tunnels over 60' below surface
Union City	85	28	1,248	0.029		Commercial	TAMAYO, JOSEPH & MARIA	Placement of tunnels over 60' below surface
Union City	85	29	1,220	0.028		Residential	SCARAMAZZA, PAUL & MARIA	Placement of tunnels over 60' below surface
Union City	85	30	1,365	0.031		Residential	PARKS, ELIZABETH	Placement of tunnels over 60' below surface
Union City	85	31	2,130	0.049		Residential	O'GRADY, BERTHA	Placement of tunnels over 60' below surface
Union City	86	1	2,600	0.060		Commercial	RANGEL, JULIAN & EUGENIA	Placement of tunnels over 60' below surface
Union City	86	17	1,875	0.043		Residential	1614 WEST ST LLC	Placement of tunnels over 60' below surface
Union City	86	18	1,890	0.043		Residential	DEBARI, MARIANGELA	Placement of tunnels over 60' below surface
Union City	86	19	1,875	0.043		Residential	WEIS, GIRARD P & KATHLEEN	Placement of tunnels over 60' below surface
Union City	86	20	1,875	0.043		Residential	MILLER, FLORENCE R.	Placement of tunnels over 60' below surface

Underground Easement								
Location	Block	Lot #	Lot Area		Zoning	Class	Owner	Project Activity
			Sq. Feet	Acre				
Union City	86	21	1,843	0.042		Residential	RODRIGUEZ,SEPHORA	Placement of tunnels over 60' below surface
Union City	86	22	2,402	0.055		Residential	TAVERAS, DAVID	Placement of tunnels over 60' below surface
Union City	86	23	2,538	0.058		Residential	POLI,MARIA	Placement of tunnels over 60' below surface
Union City	86	24	2,522	0.058		Residential	RIVERO,ELPIDIO & MARITZA	Placement of tunnels over 60' below surface
Union City	86	25.01	2,352	0.054		Residential	PEREZ, EFREN L & ANA G	Placement of tunnels over 60' below surface
Union City	86	26.01	2,352	0.054		Residential	PEREZ, EFREN L & ANA G	Placement of tunnels over 60' below surface
Union City	86	27.01	2,646	0.061		Apartment	PEREZ, EFREN L & ANA G	Placement of tunnels over 60' below surface
Union City	86	28	2,902	0.067		Residential	INFANTE,ANNY	Placement of tunnels over 60' below surface
Union City	86	29	2,875	0.066		Residential	GUAMAN, IBAN	Placement of tunnels over 60' below surface
Union City	86	30	2,850	0.065		Apartment	MORETA, RANDAL & HEIDI	Placement of tunnels over 60' below surface
Union City	77	1-11 & 26-28	35,000	0.803		Other Exempt	HOLY ROSARY SEN RES%MARZULLI R.E.	Placement of tunnels over 60' below surface
Union City	76	14-16	7,500	0.172		Apartment	1514 BERGENLINE PROPS LLC	Placement of tunnels over 60' below surface
Union City	76	17	3,800	0.087		Apartment	1512 BERGENLINE AVE ASSOC	Placement of tunnels over 60' below surface
Union City	76	18-20	6,975	0.160		Apartment	TAUBER,M% MTSR REALTY LLC	Placement of tunnels over 60' below surface
Union City	76	21-23	7,500	0.172		Public Property	FREE PUBLIC LIBRARY	Placement of tunnels over 60' below surface
Union City	76	24-26	0			Church & Charitable Property	ST MICHAELS CHURCH	Placement of tunnels over 60' below surface
Union City	76	1-5, 27	0			Church & Charitable Property	ST MICHAELS CHURCH	Placement of tunnels over 60' below surface
Union City	73	1	2,675	0.061		Commercial	1421 NEW YORK AVE ASSOC,LLC	Placement of tunnels over 60' below surface
Union City	73	2	2,800	0.064		Commercial	NATLIV ASSOCS LLC	Placement of tunnels over 60' below surface
Union City	73	3	2,500	0.057		Residential	GIRGIS, AMILYA	Placement of tunnels over 60' below surface
Union City	73	4	2,654	0.061		Residential	EGAN,MARILYN R.	Placement of tunnels over 60' below surface
Union City	73	5	3,764	0.086		Apartment	409 15TH ST ASSOC LLC	Placement of tunnels over 60' below surface
Union City	73	6	3,686	0.085		Apartment	411 15TH ST LLC	Placement of tunnels over 60' below surface
Union City	73	26	2,700	0.062		Commercial	RODRIGUEZ, ARACELY	Placement of tunnels over 60' below surface
Union City	74	6-7	4,800	0.110		Apartment	300 RE LLC	Placement of tunnels over 60' below surface
Union City	74	12	2,975	0.068		Residential	ANDERSON,DOROTHY T. & DENNIS	Placement of tunnels over 60' below surface
Union City	74	13	2,925	0.067		Residential	HEARON, MARK & MATTHEW	Placement of tunnels over 60' below surface
Union City	74	15	2,500	0.057		Residential	GBTC PROPS LLC % SCUEA MEALY	Placement of tunnels over 60' below surface
Union City	74	16	3,100	0.071		Commercial	PANTOLIANO, BARBARA	Placement of tunnels over 60' below surface
Union City	74	17	2,500	0.057		Commercial	PANTOLIANO, BARBARA	Placement of tunnels over 60' below surface

Underground Easement								
Location	Block	Lot #	Lot Area		Zoning	Class	Owner	Project Activity
			Sq. Feet	Acre				
Union City	74	18	1,834	0.042		Residential	BAUTA, RAMONA	Placement of tunnels over 60' below surface
Union City	74	19	1,800	0.041		Residential	AYALA ADAMES, GERMAN D.	Placement of tunnels over 60' below surface
Union City	74	20	1,800	0.041		Residential	OCAMPO, RICARDO	Placement of tunnels over 60' below surface
Union City	74	21	1,675	0.038		Residential	ABREU, SIMON & FRANCIA	Placement of tunnels over 60' below surface
Union City	74	22	1,650	0.038		Residential	PALACIOS, WALTER & MARIA	Placement of tunnels over 60' below surface
Union City	74	23	1,283	0.029		Residential	DIBRANGO, S% JANET OCONNOR	Placement of tunnels over 60' below surface
Union City	74	24	1,254	0.029		Residential	TORRES, GLORIA V.	Placement of tunnels over 60' below surface
Union City	74	25	1,224	0.028		Residential	ROSABALA SOLORIN	Placement of tunnels over 60' below surface
Union City	74	26	1,195	0.027		Residential	GUACAMAYA, LUIS & MARIA FLORES	Placement of tunnels over 60' below surface
Union City	74	27	1,820	0.042		Residential	PEREZ, AVILIO & ZENaida	Placement of tunnels over 60' below surface
Union City	74	28	2,263	0.052		Residential	VELASCO, ROBERTO & FRANCISCA	Placement of tunnels over 60' below surface
Union City	63	20	1,994	0.046		Residential	RAMOS, HIRAM	Placement of tunnels over 60' below surface
Union City	63	21	2,050	0.047		Residential	QUINDE, ELVIA P	Placement of tunnels over 60' below surface
Union City	63	22	2,089	0.048		Residential	SHIVE, ERIC M	Placement of tunnels over 60' below surface
Union City	63	23	2,136	0.049		Residential	FRANCO, JUAN & CECILIA	Placement of tunnels over 60' below surface
Union City	63	24	3,200	0.073		Residential	HADDOCK, MARGARITA & SABRINA & MELINDA	Placement of tunnels over 60' below surface
Union City	63	25	2,500	0.057		Residential	SALAZAR, JAIME & FIORI FELICIANO	Placement of tunnels over 60' below surface
Union City	63	26	3,700	0.085		Commercial	TEJADA, GILDA E P	Placement of tunnels over 60' below surface
Union City	181	23	3,277	0.075		Apartment	PALISADES %ATLANTIC MANGMT	Placement of tunnels over 60' below surface
Union City	181	24-25	6,206	0.142		Apartment	JOMALY CO INC	Placement of tunnels over 60' below surface
Union City	186	67-70	9,306	0.214		Apartment	1300 PALISADE AVE LLC	Placement of tunnels over 60' below surface
Union City	185	1-2	7,500	0.172		Vacant Land	HOBOKEN HEIGHTS	Placement of tunnels over 60' below surface
Union City	185	18-20	7,594	0.174		Vacant Land	HOBOKEN HEIGHTS	Placement of tunnels over 60' below surface
Union City	187	1.02, 3-4	84,150	1.932		Vacant Land	HOBOKEN HEIGHTS	Placement of tunnels over 60' below surface
Hoboken	143	1	5,650	0.130		Railroad Class 1	NJ TRANSIT CORP % RE OFFICE	Placement of tunnels over 60' below surface
Hoboken	143	19	8,750	0.201		Railroad Class 1	NJ TRANSIT CORP % RE OFFICE	Placement of tunnels over 60' below surface
Hoboken	140	1.01	75,000	1.722		Commercial	PSE&G COMPANY	Placement of tunnels over 60' below surface
Hoboken	146	4.01	2,526	0.058		Vacant Land	HARTZ MOUNTAIN IND INC	Placement of tunnels over 60' below surface
Hoboken	146	4	1,442	0.033		Vacant Land	PSE&G CORPORATE PROPERTIES	Placement of tunnels over 60' below surface
Hoboken	141	12	20,000	0.459		Industrial	PSE & G COMPANY	Placement of tunnels over 60' below surface

Underground Easement								
Location	Block	Lot #	Lot Area		Zoning	Class	Owner	Project Activity
			Sq. Feet	Acre				
Hoboken	256	1.01	0				N/F CITY OF HOBOKEN	Placement of tunnels over 60' below surface
Hoboken	269.04	1	0				N/F CITY OF HOBOKEN	Placement of tunnels over 60' below surface
Hoboken	267	1	0				N/F CITY OF HOBOKEN	Placement of tunnels over 60' below surface
Hoboken	265	1	1,012,522	23.244		Public Property	MAYOR & COUNCIL	Placement of tunnels over 60' below surface
Hoboken	264	2	343,649	7.889		Public Property	MAYOR & COUNCIL	Placement of tunnels over 60' below surface
Hoboken	264	3.01	17,322	0.398		Public Property	HOBOKEN COVE LLC C/O TOLL BROTHERS	Placement of tunnels over 60' below surface
Manhattan	661	River					NEW YORK STATE- OFFICE OF GENERAL SERVICE	Placement of tunnels over 60' below surface
Manhattan	665	6	0				NYS DOT	Placement of tunnels over 60' below surface
Manhattan	665	68	0				NYS DOT	Placement of tunnels over 60' below surface

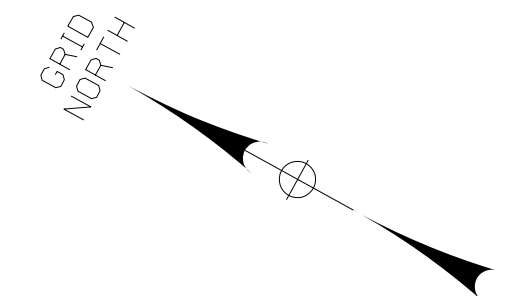
Permanent Subsurface Easements Total =

	Shaded Row Signifies Permanent Subsurface Easement A(PSE) acquired By NJ TRANSIT - these parcels not included in parcel count
	Shaded Row Signifies Parcels Owned By NJ TRANSIT HBLRT - these parcels not included in parcel count

Sub-Surface Easement Plan

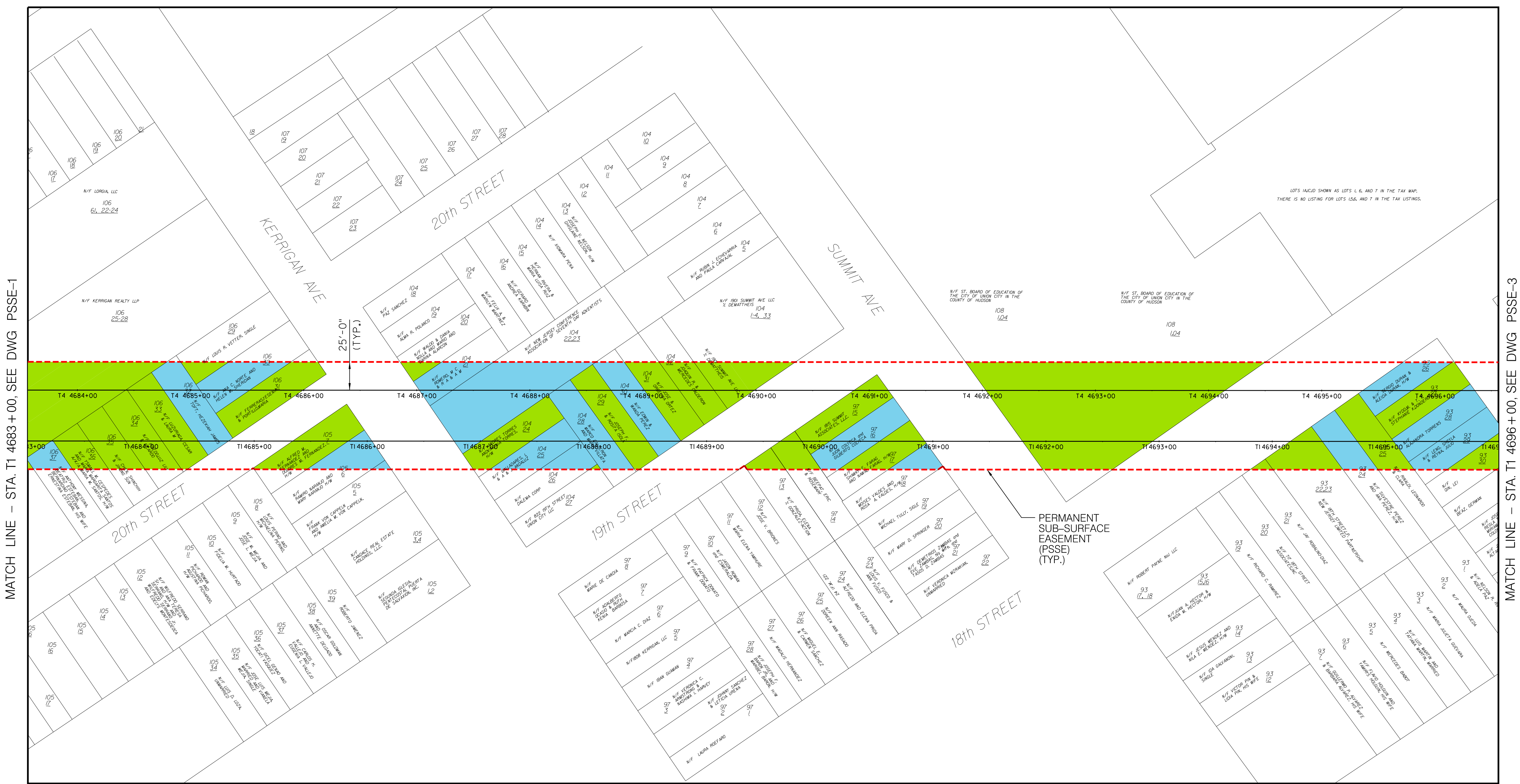
LEGEND FOR SUB-SURFACE EASEMENT

- PREVIOUSLY ACQUIRED PARCEL AREA
- PROPOSED PARCEL AREA
- PERMANENT SUB-SURFACE EASEMENT (PSSE)



NEWARK ←

NEW YORK →



MATCH LINE - STA. T1 4683+00, SEE DWG PSSE-1

MATCH LINE - STA. T1 4696+00, SEE DWG PSSE-3

25'-0" (TYP.)

PERMANENT SUB-SURFACE EASEMENT (PSSE) (TYP.)

PLAN



P:\A\PROJECTS\102_PPSSE\COM\PM\SE\81554\DOCUMENTS\GMB\BAC-HUDSON\NY\NY\1177386_1\OTHER_PROJECTS\WORKING\STV_INCREMENTAL_STUDY\EASEMENT_STUDY\COM\18\SUB-SURFACE_EASEMENT\09\PSSE-2.DWG, 5/31/17, PM, G-HUDSON\OTI, TRU, SEBEHRM

No.	Revisions	Date	By

Amtrak®

This material is owned by and is the sole and exclusive property of the National Railroad Passenger Corporation (Amtrak), Office of Engineering, and is supplied on a confidential basis solely for use in connection with the design and construction of Amtrak facilities and equipment. The reproduction, display, sale or other disposition of this document without the express written consent of the National Railroad Passenger Corporation, Office of Engineering, is prohibited.

Office of Deputy Chief Engineer
STRUCTURES
National Railroad Passenger Corporation
30th Street Station, Philadelphia, Pennsylvania 19104

Approved	Date

The Gateway Trans-Hudson Partnership

AZCOM WSP PARSONS BRINCKERHOFF STV 100

HUDSON TUNNEL PROJECT PRELIMINARY ENGINEERING

FROM STA. T1 4683+00 TO T1 4696+00
SUB-SURFACE EASEMENT LIMIT
SHEET 2 OF 8

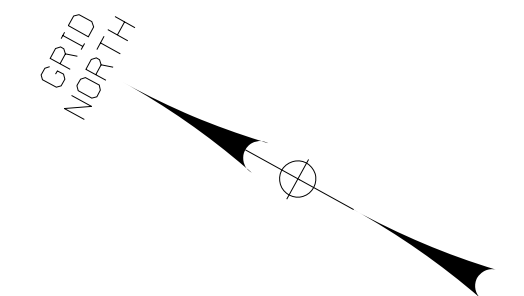
Designed MS Drawn MS Checked DY Date 05/30/2017

Contract No.	
Sheet No.	OF
Dwg. No. PSSE - 2	

P:\A\PROJECTS\102-PPSVC-COM\PM\SE\81554\DOCUMENTS\GMB\BAC-HUDSON\NY\NY\1177386-1\GTHP-PROJECT\WORKING\STV-INC\EASEMENT-STUDY\10M-TB\SUB-SURFACE-EASEMENT\SUBSET-3-DWG-562-18-R1M-G-HUDSON\11-TB-SE\BHM

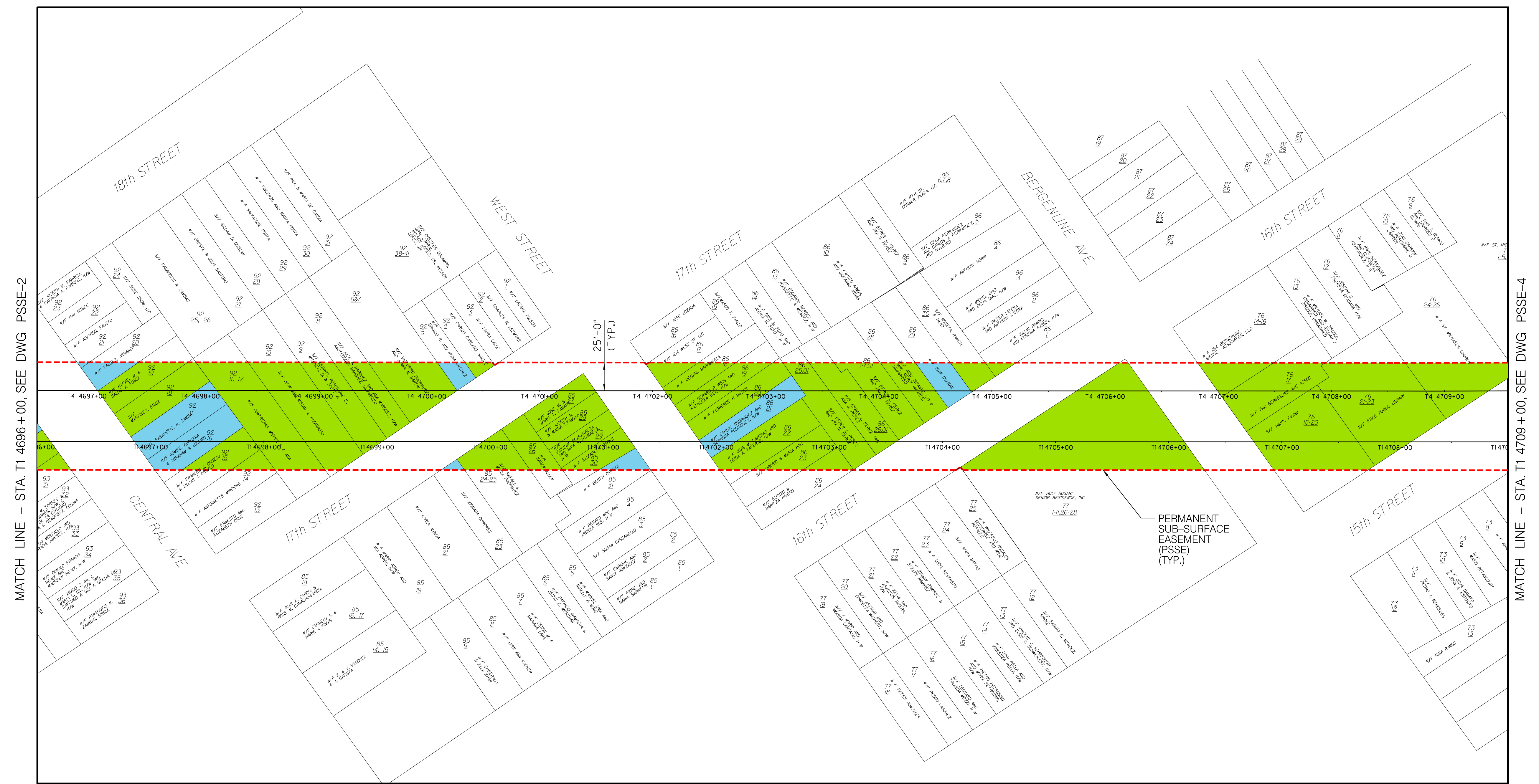
LEGEND FOR SUB-SURFACE EASEMENT

- PREVIOUSLY ACQUIRED PARCEL AREA
- PROPOSED PARCEL AREA
- PERMANENT SUB-SURFACE EASEMENT (PSSE)



NEWARK ←

NEW YORK →



MATCH LINE - STA. T1 4696+00, SEE DWG PSSE-2

MATCH LINE - STA. T1 4709+00, SEE DWG PSSE-4

PLAN



No.	Revisions	Date	By

Amtrak®

This material is owned by and is the sole and exclusive property of the National Railroad Passenger Corporation (Amtrak), Office of Engineering, and is supplied on a confidential basis solely for use in connection with the design and construction of Amtrak facilities and equipment. The reproduction, display, sale or other disposition of this document without the express written consent of the National Railroad Passenger Corporation, Office of Engineering, is prohibited.

Office of Deputy Chief Engineer
STRUCTURES
 National Railroad Passenger Corporation
 30th Street Station, Philadelphia, Pennsylvania 19104

Approved	Date

The Gateway Trans-Hudson Partnership

AZCOM WSP PARSONS BRINCKERHOFF STV 100

HUDSON TUNNEL PROJECT PRELIMINARY ENGINEERING

FROM STA. T1 4696+00 TO T1 4709+00
 SUB-SURFACE EASEMENT LIMIT
 SHEET 3 OF 8

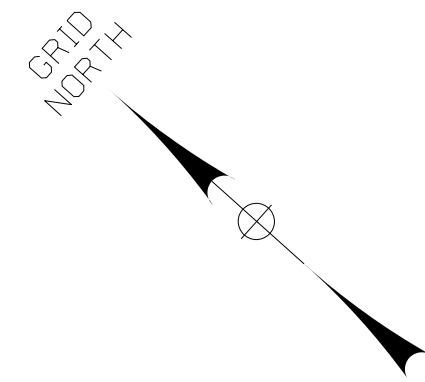
Designed MS Drawn MS Checked DY Date 05/30/2017

Contract No.	
Sheet No.	OF
Dwg. No. PSSE - 3	

6-HUDSON-TR1
4-HUDSON-TR1
4-DOCS-DEC-17-1PM
PROJECT WORKING DSV - INCISEMENT STUDY/ITEM 1B-SUB-SURFACE EASEMENT SHEET 4.DWG

LEGEND FOR SUB-SURFACE EASEMENT

- PREVIOUSLY ACQUIRED PARCEL AREA
- PROPOSED PARCEL AREA
- PERMANENT SUB-SURFACE EASEMENT (PSSE)

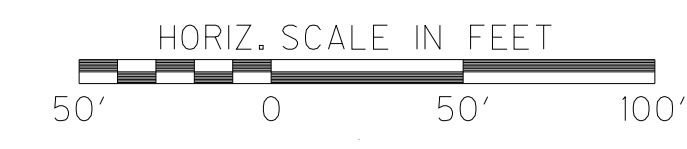


NEWARK ←

→ NEW YORK



PLAN



No.	Revisions	Date	By

This material is owned by and is the sole and exclusive property of the National Railroad Passenger Corporation (Amtrak), Office of Engineering, and is supplied on a confidential basis solely for use in connection with the design and construction of Amtrak facilities and equipment. The reproduction, display, sale or other disposition of this document without the express written consent of the National Railroad Passenger Corporation, Office of Engineering, is prohibited.

Office of Deputy Chief Engineer
STRUCTURES
National Railroad Passenger Corporation
30th Street Station, Philadelphia, Pennsylvania 19104

Approved	Date

The Gateway
Trans-Hudson
Partnership

AZCOM WSP PARSONS BRINCKERHOFF STV 100 years

HUDSON TUNNEL PROJECT
PRELIMINARY ENGINEERING
FROM STA. T1 4709+00 TO T1 4722+00
SUB-SURFACE EASEMENT LIMIT
SHEET 4 OF 8

Designed MS Drawn MS Checked DY Date 05/30/2017

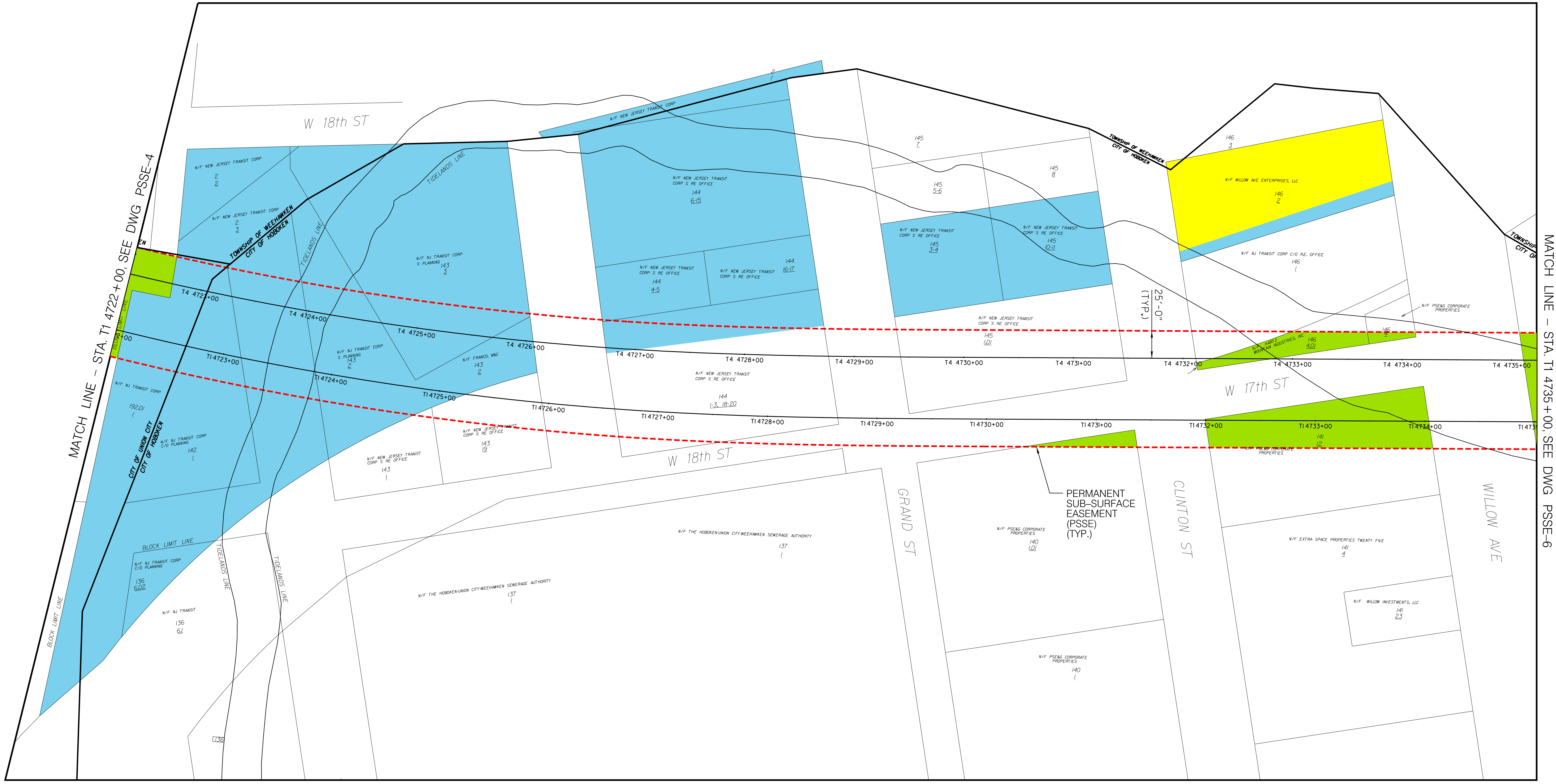
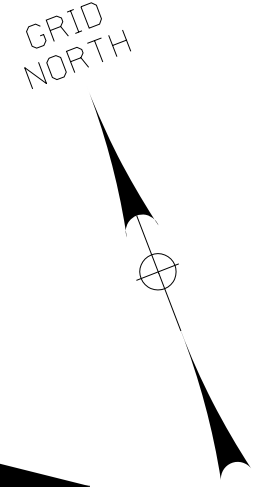
Contract No.	
Sheet No.	OF
Dwg. No.	PSSE - 4

LEGEND FOR SUB-SURFACE EASEMENT

- PREVIOUSLY ACQUIRED PARCEL AREA
- PROPOSED PARCEL AREA
- PROPOSED TEMPORARY SURFACE EASEMENT
- PERMANENT SUB-SURFACE EASEMENT (PSSE)

NEWARK ←

NEW YORK →



PLAN



P:\A\PROJECTS\102-PPSVC-COM\PIV\SE\1554\DOCUMENTS\AMTRAK-HUDSON\NYCN\187738A-1\OTHER\PROJECT\XXWORK\NEWSTV-INC\EASEMENT-STUDY\COM-1\SUB-SURFACE-EASEMENT\0501187738A-1.dwg

No.	Revisions	Date	By

Amtrak®

This material is owned by and is the sole and exclusive property of the National Railroad Passenger Corporation (Amtrak), Office of Engineering, and is supplied on a confidential basis solely for use in connection with the design and construction of Amtrak facilities and equipment. The reproduction, display, sale or other disposition of this document without the express written consent of the National Railroad Passenger Corporation, Office of Engineering, is prohibited.

Office of Deputy Chief Engineer
STRUCTURES
 National Railroad Passenger Corporation
 30th Street Station, Philadelphia, Pennsylvania 19104

Approved	Date

The Gateway Trans-Hudson Partnership

AZCOM **WSP** **PARSONS BRINCKERHOFF** **STV** **100**

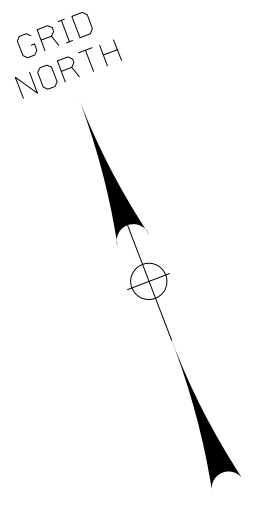
HUDSON TUNNEL PROJECT
PRELIMINARY ENGINEERING
 FROM STA. T1 4722+00 TO T1 4735+00
 SUB-SURFACE EASEMENT LIMIT
 SHEET 5 OF 8

Designed MS Drawn MS Checked DY Date 05/30/2017

Contract No.	
Sheet No.	OF
Dwg. No.	PSSE - 5

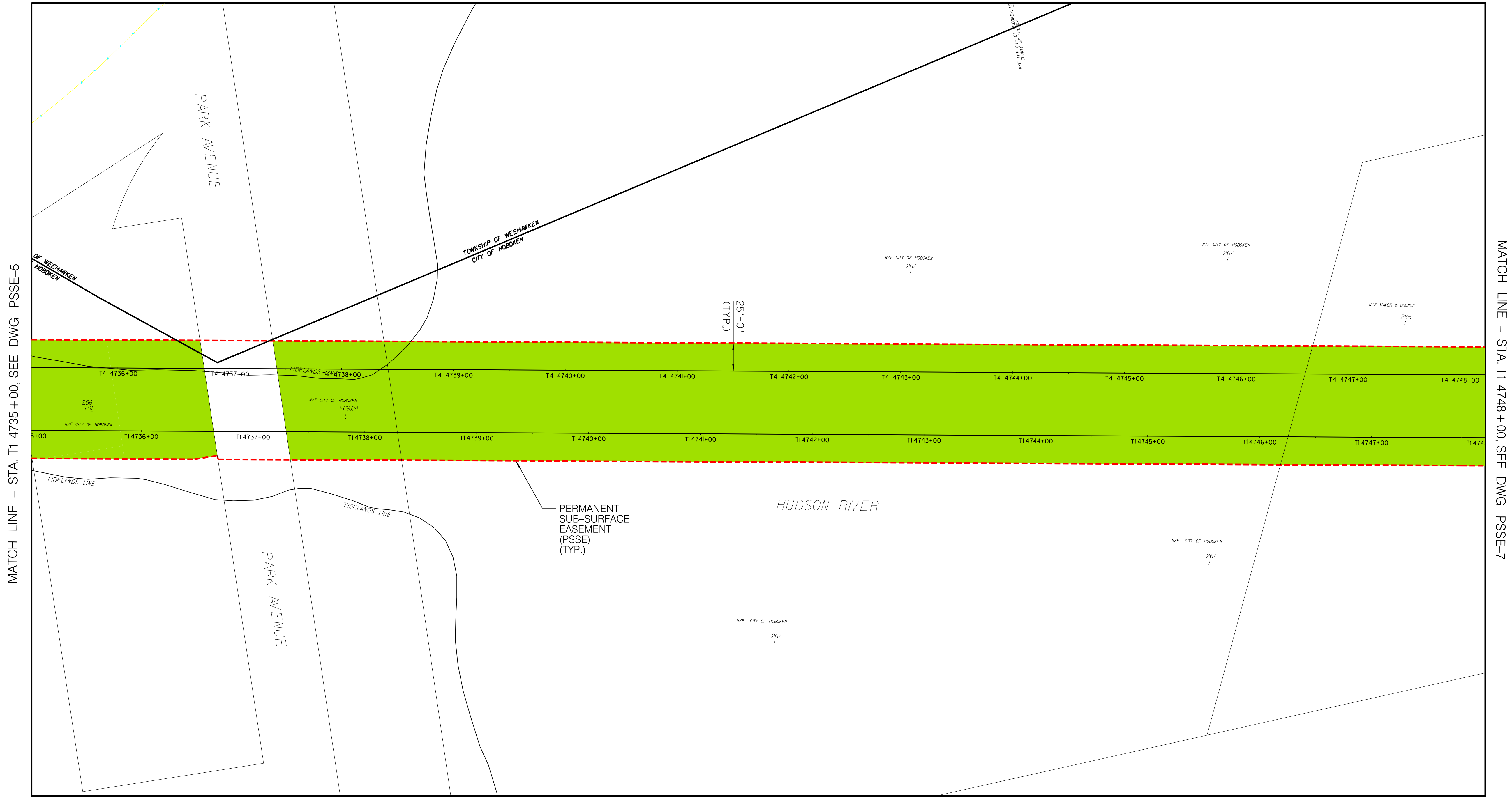
LEGEND FOR SUB-SURFACE EASEMENT

- PREVIOUSLY ACQUIRED PARCEL AREA
- PROPOSED PARCEL AREA
- PERMANENT SUB-SURFACE EASEMENT (PSSE)



NEWARK ←

NEW YORK →



PLAN



P:\A\PROJECTS\102-PPSVC-COM\PM\SE\8155\4\DOCUMENTS\AMTRAK-HUDSON\NY\NYC\187738A-1\OTHER\PROJECT\WORKING\STV-INC\EASEMENT-STUDY\EASEMENT-STUDY-ITEM-18\SUB-SURFACE-EASEMENT\DRIBET-6.DWG-41x11-18M-6-HUDSON01.TRI-SEBHEM

No.	Revisions	Date	By

Amtrak®
This material is owned by and is the sole and exclusive property of the National Railroad Passenger Corporation (Amtrak), Office of Engineering, and is supplied on a confidential basis solely for use in connection with the design and construction of Amtrak facilities and equipment. The reproduction, display, sale or other disposition of this document without the express written consent of the National Railroad Passenger Corporation, Office of Engineering, is prohibited.

Office of Deputy Chief Engineer
STRUCTURES
 National Railroad Passenger Corporation
 30th Street Station, Philadelphia, Pennsylvania 19104

Approved	Date

The Gateway Trans-Hudson Partnership
AZCOM **WSP** **PARSONS BRINCKERHOFF** **STV** **100 Years**

HUDSON TUNNEL PROJECT
PRELIMINARY ENGINEERING
 FROM STA. T1 4735+00 TO T1 4748+00
 SUB-SURFACE EASEMENT LIMIT
 SHEET 6 OF 8
 Designed MS Drawn MS Checked DY Date 05/30/2017

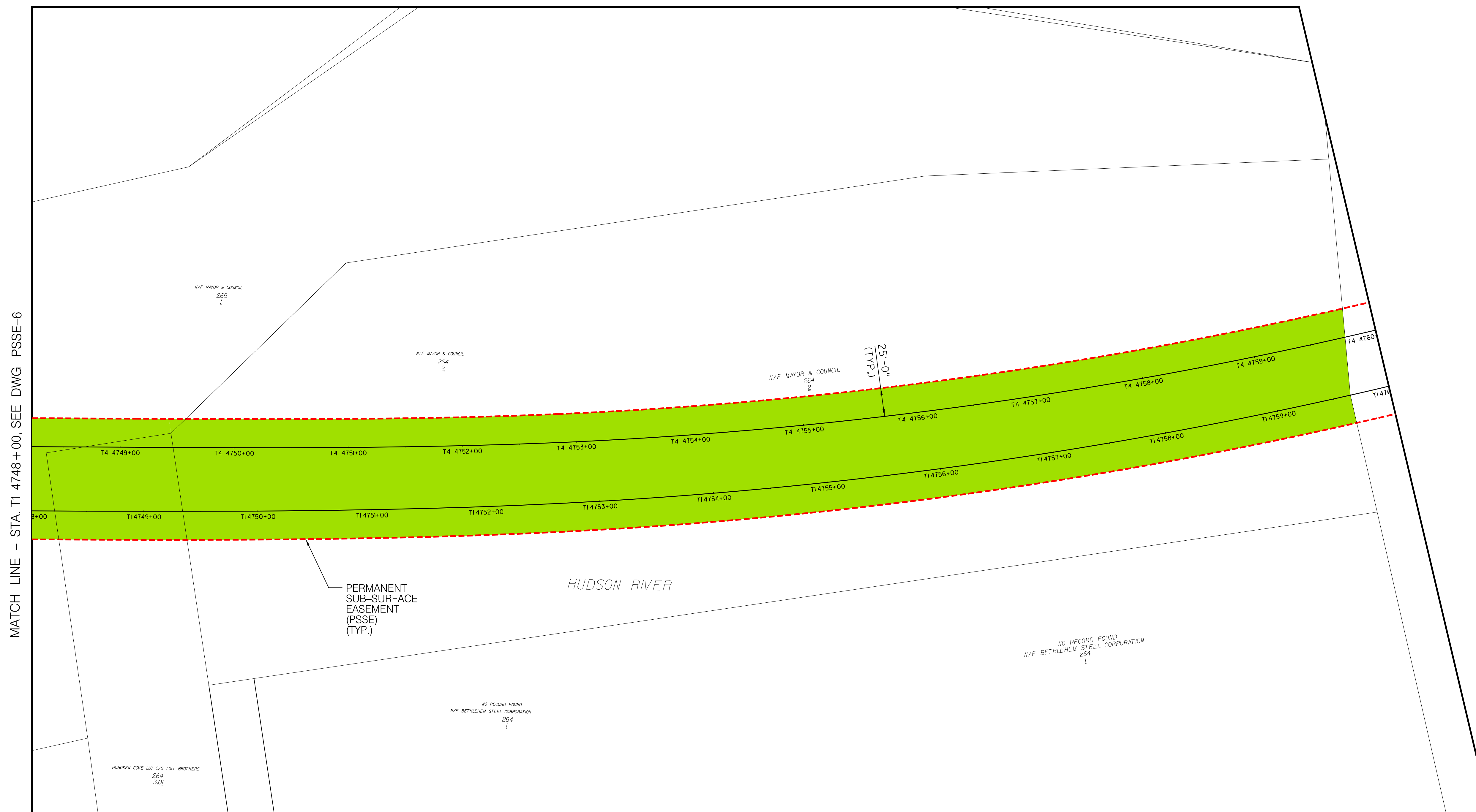
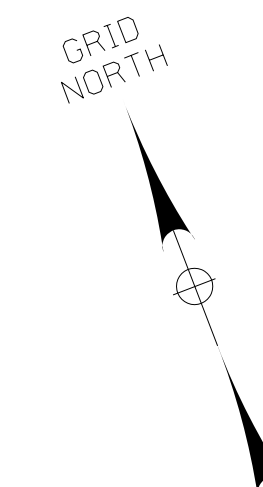
Contract No.	
Sheet No.	OF
Dwg. No.	PSSE - 6

LEGEND FOR SUB-SURFACE EASEMENT

- PREVIOUSLY ACQUIRED PARCEL AREA
- PROPOSED PARCEL AREA
- PERMANENT SUB-SURFACE EASEMENT (PSSE)

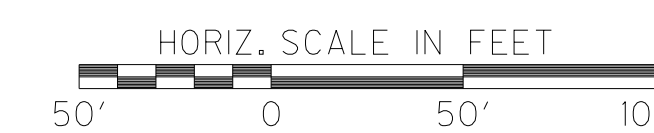
NEWARK ←

NEW YORK →



MATCH LINE - STA. T1 4748+00, SEE DWG. PSSE-6

PLAN



P:\A\PROJECTS\102-PPSVC-COM\PM\SE\81554\DOCUMENT\SUBSURFACE EASEMENT STUDY\WORKBOOK\SUBSURFACE EASEMENT STUDY\DWG-PSSE-7.DWG: 4/27/17 4:48:43 PM

No.	Revisions	Date	By

This material is owned by and is the sole and exclusive property of the National Railroad Passenger Corporation (Amtrak), Office of Engineering, and is supplied on a confidential basis solely for use in connection with the design and construction of Amtrak facilities and equipment. The reproduction, display, sale or other disposition of this document without the express written consent of the National Railroad Passenger Corporation, Office of Engineering, is prohibited.

Office of Deputy Chief Engineer
STRUCTURES
National Railroad Passenger Corporation
30th Street Station, Philadelphia, Pennsylvania 19104

Approved	Date

**HUDSON TUNNEL PROJECT
PRELIMINARY ENGINEERING**

FROM STA. T1 4748+00 TO T1 4760+00
SUB-SURFACE EASEMENT LIMIT
SHEET 7 OF 8

Designed MS | Drawn MS | Checked DY | Date 05/30/2017

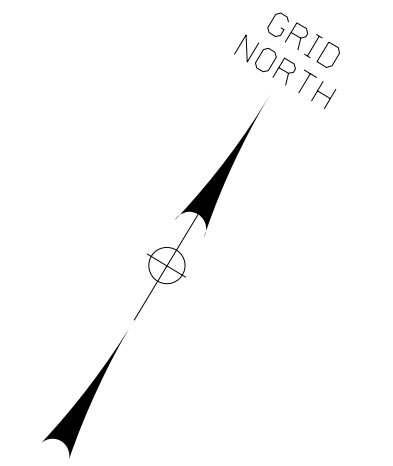
Contract No. _____
Sheet No. _____ OF _____
Dwg. No. **PSSE - 7**

Surface Easement Plan

P:\A\PROJECTS\102_PRESVC\COM\PIV\SE\81554\DOCUMENTS\AMTRAK-HUDSON\NY\NYC\1187738A\1\OTHER\PROJECT\WORKING\STV\INC\EASEMENT\STUDY\ITEM\LIB\SURFACE_EASEMENT\SE\SE-1.DWG 11/01/16 10:54 AM 6-HUDSON01.TRI SEBEHRM

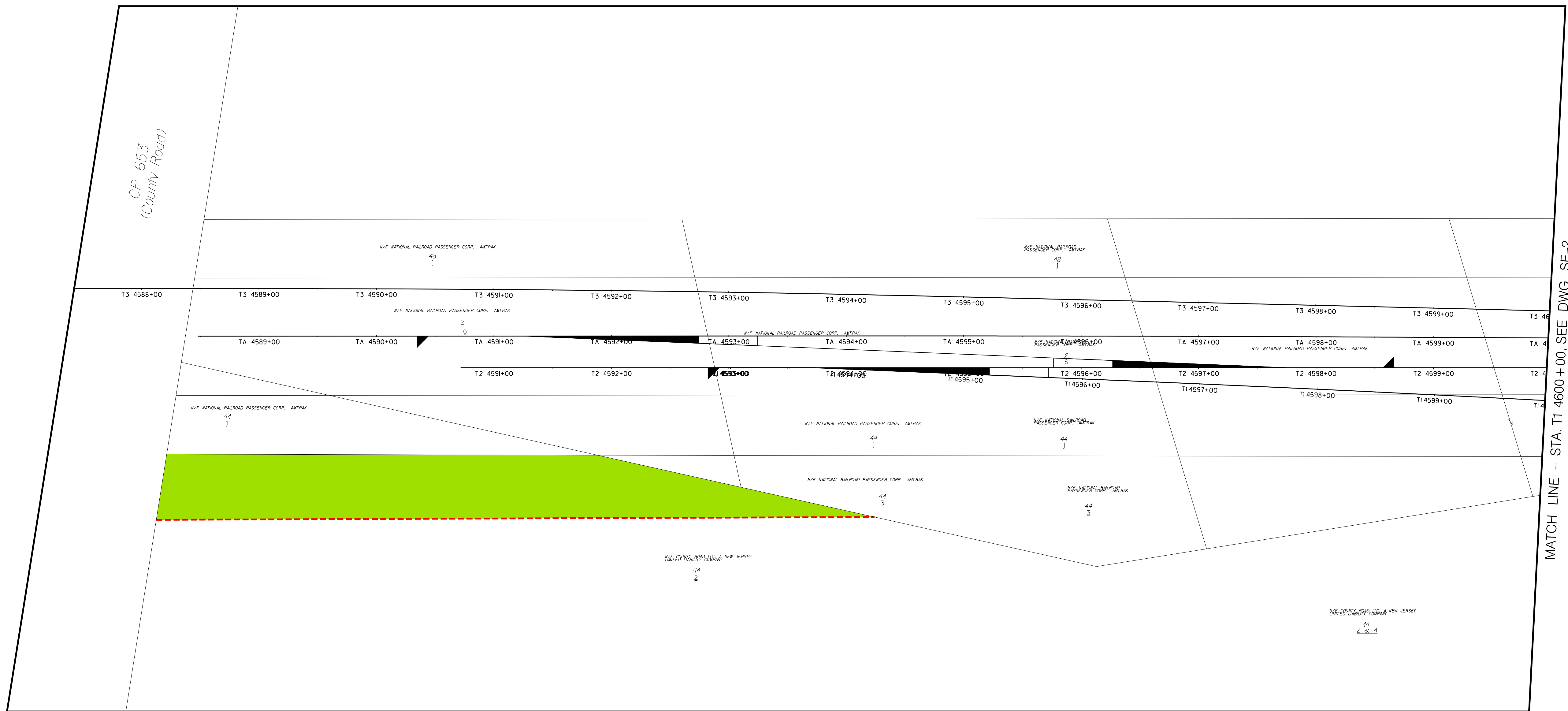
LEGEND FOR SURFACE EASEMENT

- PROPOSED PERMANENT SURFACE EASEMENT
- PROPOSED TEMPORARY SURFACE EASEMENT
- PREVIOUSLY ACQUIRED PARCEL AREA
- SURFACE EASEMENT (SE)



NEWARK ←

NEW YORK →



MATCH LINE - STA. T1 4600+00, SEE DWG SE-2

PLAN



No.	Revisions	Date	By

Amtrak®

This material is owned by and is the sole and exclusive property of the National Railroad Passenger Corporation (Amtrak), Office of Engineering, and is supplied on a confidential basis solely for use in connection with the design and construction of Amtrak facilities and equipment. The reproduction, display, sale or other disposition of this document without the express written consent of the National Railroad Passenger Corporation, Office of Engineering, is prohibited.

Office of Deputy Chief Engineer
STRUCTURES
National Railroad Passenger Corporation
30th Street Station, Philadelphia, Pennsylvania 19104

Approved	Date

The Gateway
Trans-Hudson
Partnership

AZCOM **WSP** **PARSONS BRINCKERHOFF** **STV** **100 Years**

HUDSON TUNNEL PROJECT
PRELIMINARY ENGINEERING

FROM STA. T1 4593+00 TO T1 4600+00
SURFACE EASEMENT LIMIT
SHEET 1 OF 8

Designed MS Drawn MS Checked DY Date 05/30/2017

Contract No.

Sheet No. OF

Dwg. No. SE-1

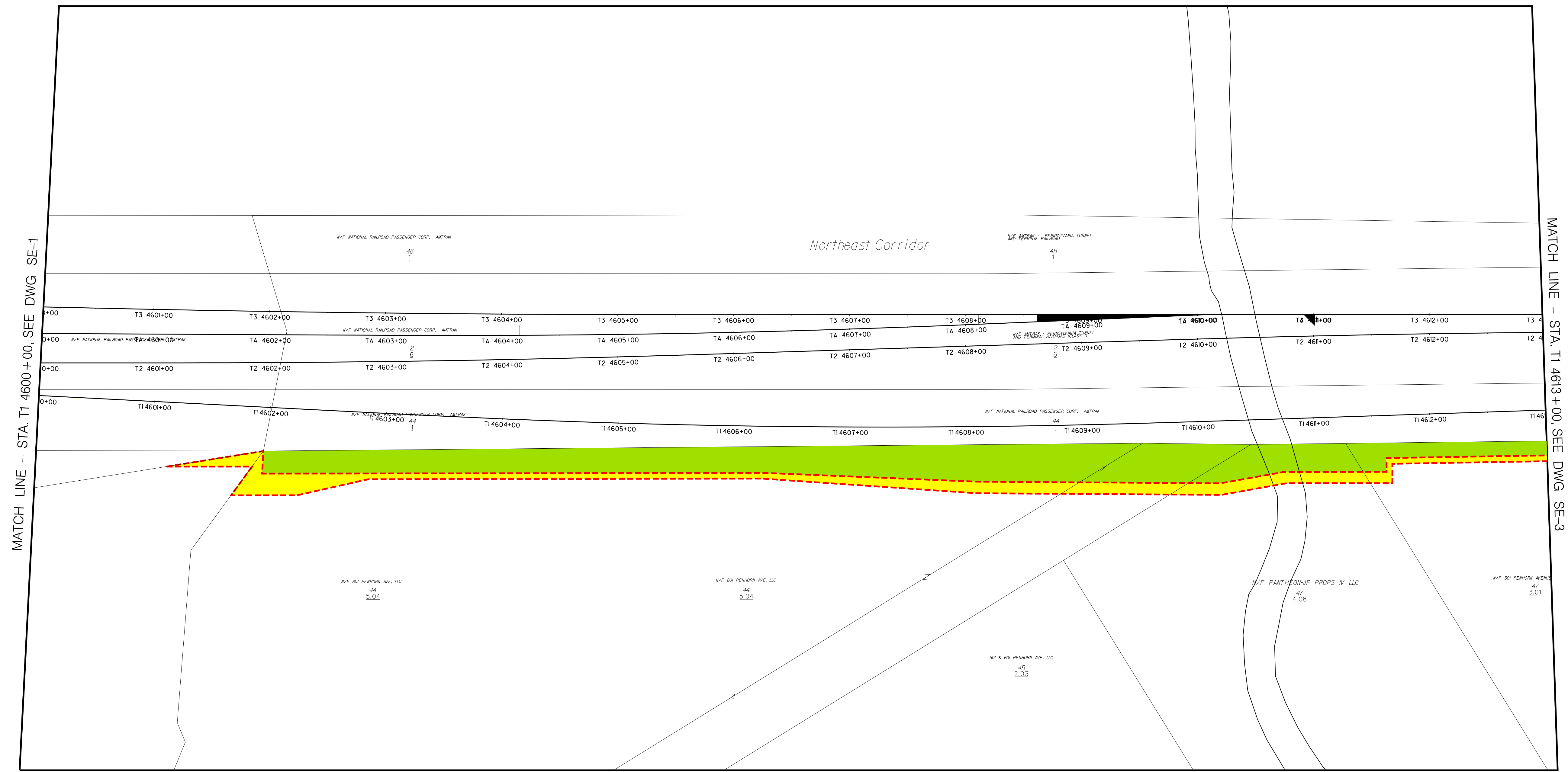
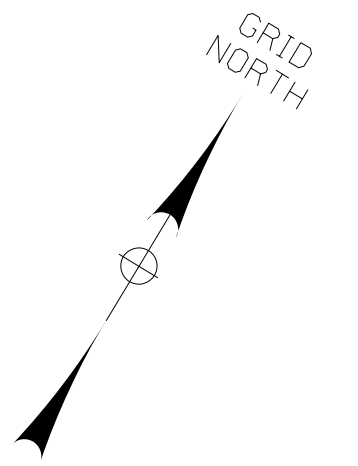
P:\A\PROJECTS\102-PPSVC-COM-PW-SE\81554\DOCUMENTS\AMTRAK-HUDSON\NYCN\187738A-1-01\THE-PROJECT\XWORKING\STV-LINE/EASEMENT-STUDY/ITEM-1/13-46-AM-11-13-46-AM-6-HUDSON01.TRI-SE-2.DWG

LEGEND FOR SURFACE EASEMENT

- PROPOSED PERMANENT SURFACE EASEMENT
- PROPOSED TEMPORARY SURFACE EASEMENT
- PREVIOUSLY ACQUIRED PARCEL AREA
- SURFACE EASEMENT (SE)

NEWARK ←

NEW YORK →



PLAN



No.	Revisions	Date	By

Amtrak®

This material is owned by and is the sole and exclusive property of the National Railroad Passenger Corporation (Amtrak), Office of Engineering, and is supplied on a confidential basis solely for use in connection with the design and construction of Amtrak facilities and equipment. The reproduction, display, sale or other disposition of this document without the express written consent of the National Railroad Passenger Corporation, Office of Engineering, is prohibited.

Office of Deputy Chief Engineer
STRUCTURES
 National Railroad Passenger Corporation
 30th Street Station, Philadelphia, Pennsylvania 19104

Approved	Date

The Gateway Trans-Hudson Partnership





AZCOM **WSP** **PARSONS BRINCKERHOFF** **STV** **100 Years**

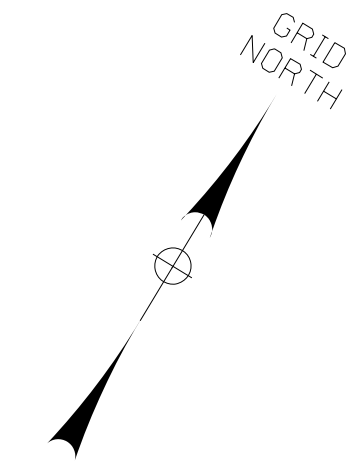
HUDSON TUNNEL PROJECT
PRELIMINARY ENGINEERING
 FROM STA. T1 4600+00 TO T1 4613+00
SURFACE EASEMENT LIMIT
 SHEET 2 OF 8

Designed MS Drawn MS Checked DY Date 05/30/2017

Contract No.	
Sheet No.	OF
Dwg. No.	SE-2

LEGEND FOR SURFACE EASEMENT

-  PROPOSED PERMANENT SURFACE EASEMENT
-  PROPOSED TEMPORARY SURFACE EASEMENT
-  PREVIOUSLY ACQUIRED PARCEL AREA
-  SURFACE EASEMENT (SE)

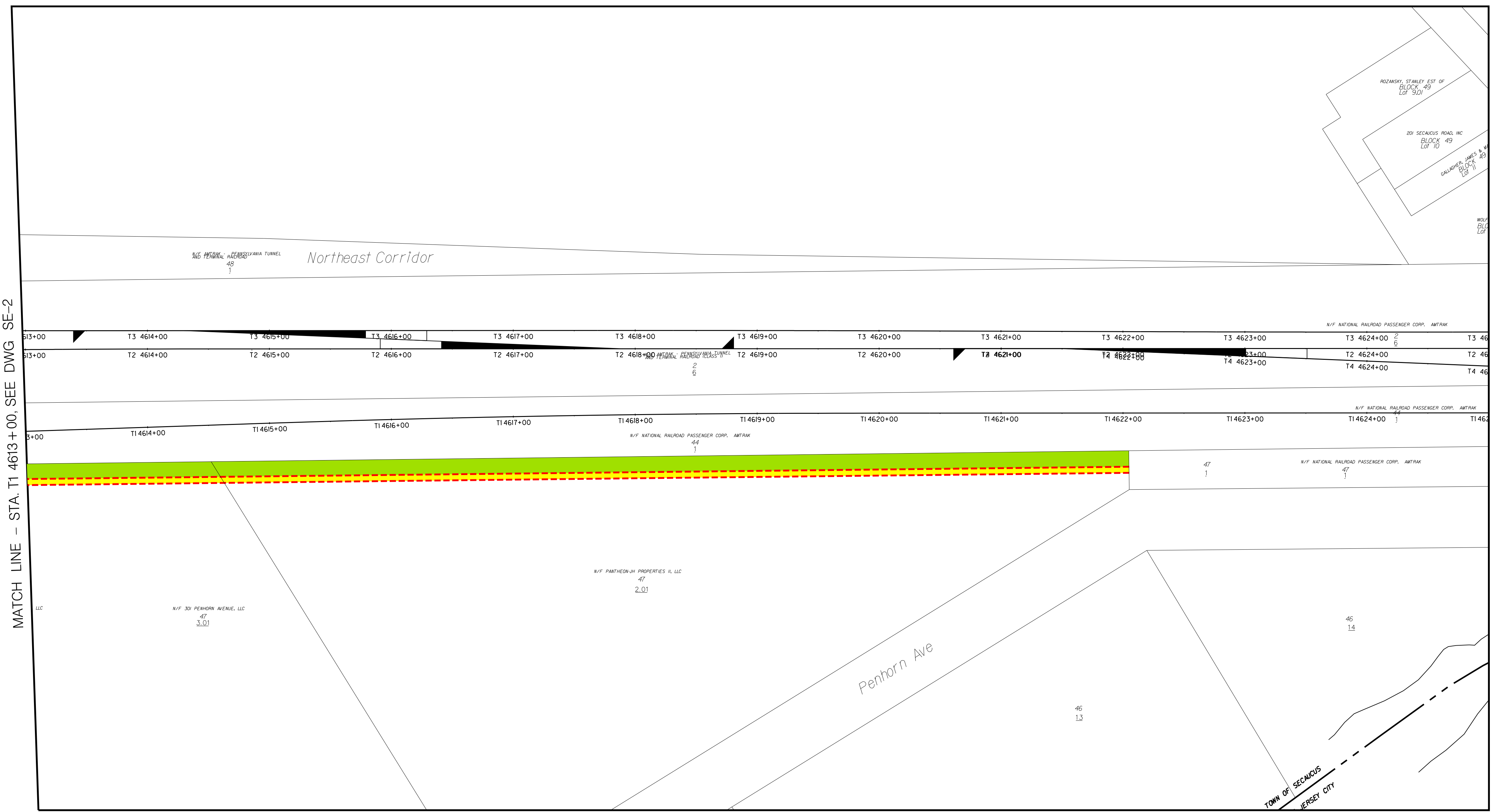


NEWARK ←

NEW YORK →

MATCH LINE - STA. T1 4613+00. SEE DWG. SE-2

MATCH LINE - STA. T1 4625+00. SEE DWG. SE-4



PLAN



P:\A\PROJECTS\102_PBSVC_C004_P\SE\81554\DOCUMENTS\AMTRAK-HUDSON\NY\NYC\187738A_1\OTHER_PROJECTS\WORKING\STV_ENC\EASEMENT-STUDY\TDM_TB\SURFACE_EASEMENT\SE-3.DWG 13-16-14 AM 6-HUDSON01.TRI SEBHRM

No.	Revisions	Date	By

Amtrak®

This material is owned by and is the sole and exclusive property of the National Railroad Passenger Corporation (Amtrak), Office of Engineering, and is supplied on a confidential basis solely for use in connection with the design and construction of Amtrak facilities and equipment. The reproduction, display, sale or other disposition of this document without the express written consent of the National Railroad Passenger Corporation, Office of Engineering, is prohibited.

Office of Deputy Chief Engineer
STRUCTURES
National Railroad Passenger Corporation
30th Street Station, Philadelphia, Pennsylvania 19104

Approved	Date

The Gateway Trans-Hudson Partnership

AZCOM **WSP** **PARSONS BRINCKERHOFF** **STV** **100 Years**

HUDSON TUNNEL PROJECT
PRELIMINARY ENGINEERING

FROM STA. T1 4613+00 TO T1 4625+00
SURFACE EASEMENT LIMIT
SHEET 3 OF 8

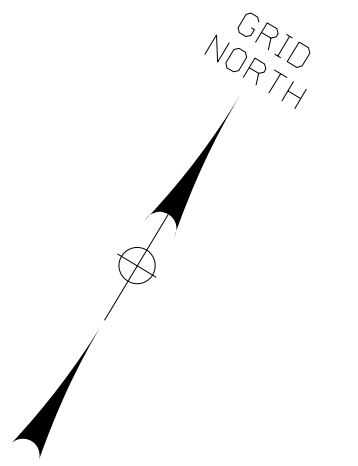
Designed MS Drawn MS Checked DY Date 05/30/2017

Contract No.	
Sheet No.	OF
Dwg. No.	SE-3

P:\A\PROJECTS\102-PPSVC-COM-PW-SE\1554\DOCUMENTS\AMTRAK-HUDSON\NY\CA\187738A-1\OTHER-PROJECTS\WORKING\STV-INC\EASEMENT-STUDY\ITEM-1\B-SURFACE-EASEMENT\SE-4.DWG 11/24/17 AM 6:45:00 PM TBI SEBEHRM

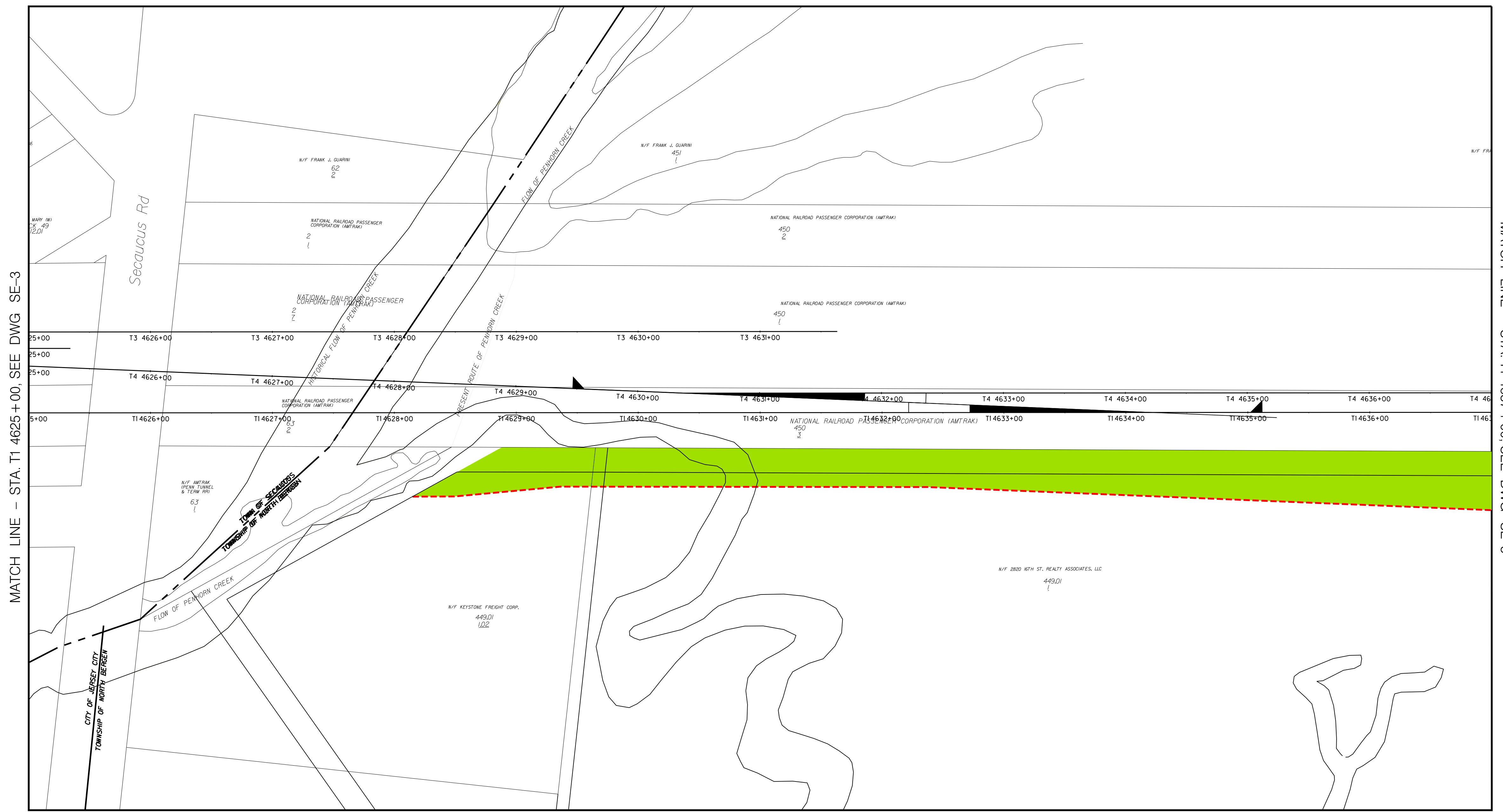
LEGEND FOR SURFACE EASEMENT

- PROPOSED PERMANENT SURFACE EASEMENT
- PROPOSED TEMPORARY SURFACE EASEMENT
- PREVIOUSLY ACQUIRED PARCEL AREA
- SURFACE EASEMENT (SE)



NEWARK ←

NEW YORK →



PLAN



No.	Revisions	Date	By

Amtrak®

This material is owned by and is the sole and exclusive property of the National Railroad Passenger Corporation (Amtrak), Office of Engineering, and is supplied on a confidential basis solely for use in connection with the design and construction of Amtrak facilities and equipment. The reproduction, display, sale or other disposition of this document without the express written consent of the National Railroad Passenger Corporation, Office of Engineering, is prohibited.

Office of Deputy Chief Engineer
STRUCTURES
 National Railroad Passenger Corporation
 30th Street Station, Philadelphia, Pennsylvania 19104

Approved	Date

The Gateway Trans-Hudson Partnership

AZCOM WSP PARSONS BRINCKERHOFF STV 100 Years

HUDSON TUNNEL PROJECT
PRELIMINARY ENGINEERING

FROM STA. T1 4625+00 TO T1 4637+00
 SURFACE EASEMENT LIMIT
 SHEET 4 OF 8

Designed MS Drawn MS Checked DY Date 05/30/2017

Contract No.	
Sheet No.	OF
Dwg. No.	SE - 4

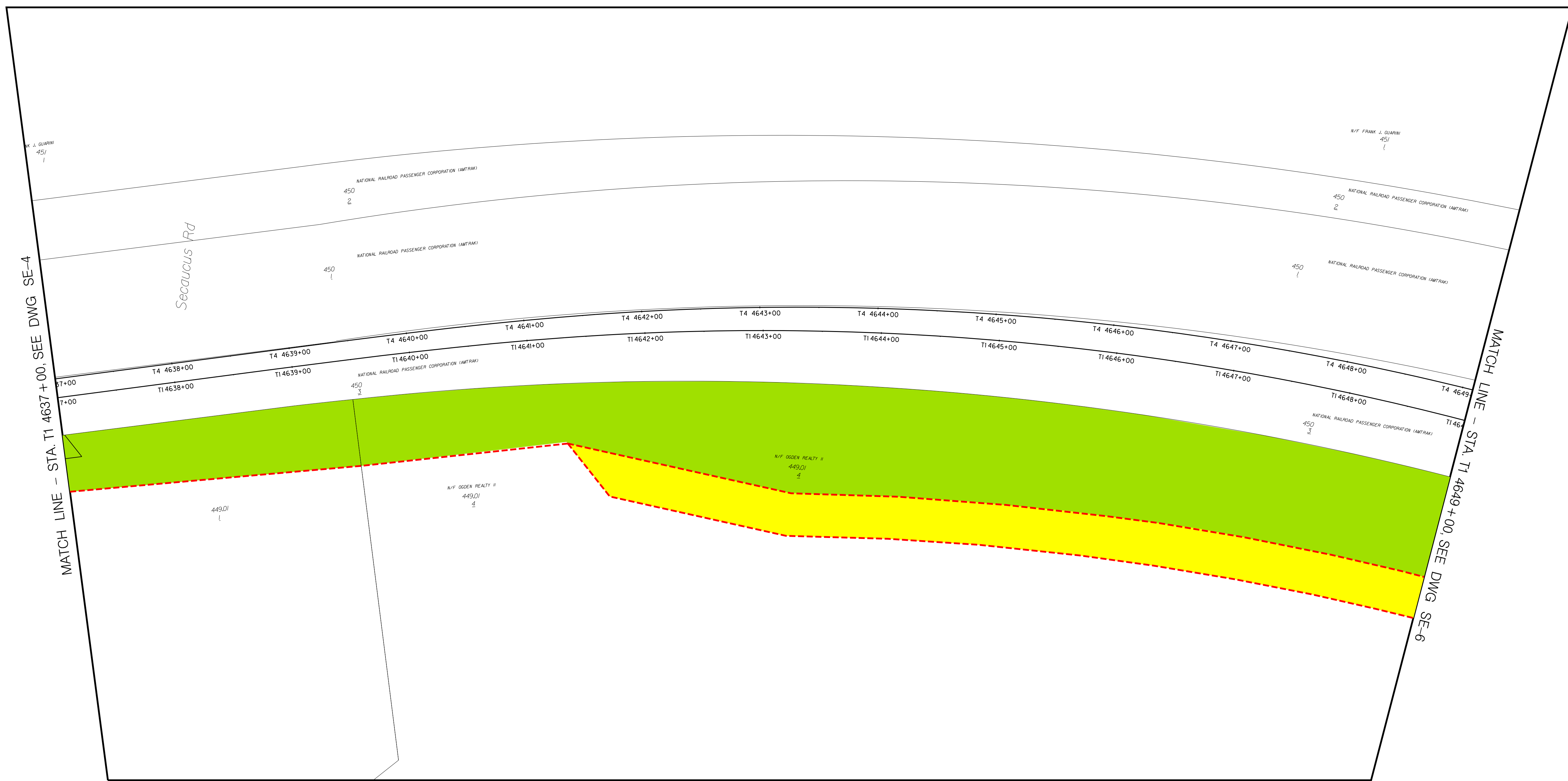
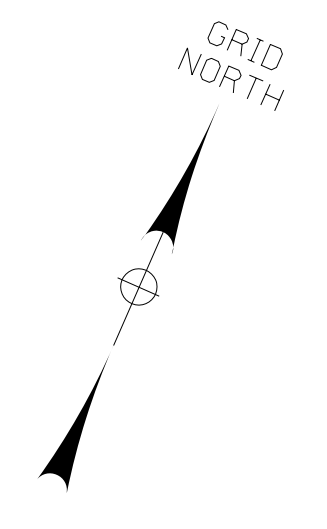
P:\A\PROJECTS\102-PPSVC-COMM\PIV\SE\81554\DOCUMENTS\GINTBAG-HUDSON\NYCN\187738A-1\OTHER\PROJECT\XWORKING\STV\INC\EASEMENT-STUDY\ITEM\LIB\SURFACE-EASEMENT\SE-5.DWG T1-18-18-25.DWG 6-HUDSON\1-TR1-SE-5.DWG

LEGEND FOR SURFACE EASEMENT

- PROPOSED PERMANENT SURFACE EASEMENT
- PROPOSED TEMPORARY SURFACE EASEMENT
- PREVIOUSLY ACQUIRED PARCEL AREA
- SURFACE EASEMENT (SE)

NEWARK ←

NEW YORK →



PLAN



No.	Revisions	Date	By

Amtrak®

This material is owned by and is the sole and exclusive property of the National Railroad Passenger Corporation (Amtrak), Office of Engineering, and is supplied on a confidential basis solely for use in connection with the design and construction of Amtrak facilities and equipment. The reproduction, display, sale or other disposition of this document without the express written consent of the National Railroad Passenger Corporation, Office of Engineering, is prohibited.

Office of Deputy Chief Engineer
STRUCTURES
 National Railroad Passenger Corporation
 30th Street Station, Philadelphia, Pennsylvania 19104

Approved	Date

The Gateway Trans-Hudson Partnership

AZCOM **WSP** **PARSONS BRINCKERHOFF** **STV** **100 Years**

HUDSON TUNNEL PROJECT
PRELIMINARY ENGINEERING
 FROM STA. T1 4637+00 TO T1 4649+00
SURFACE EASEMENT LIMIT
 SHEET 5 OF 8

Designed MS Drawn MS Checked DY Date 05/30/2017

Contract No.	
Sheet No.	OF
Dwg. No.	SE-5

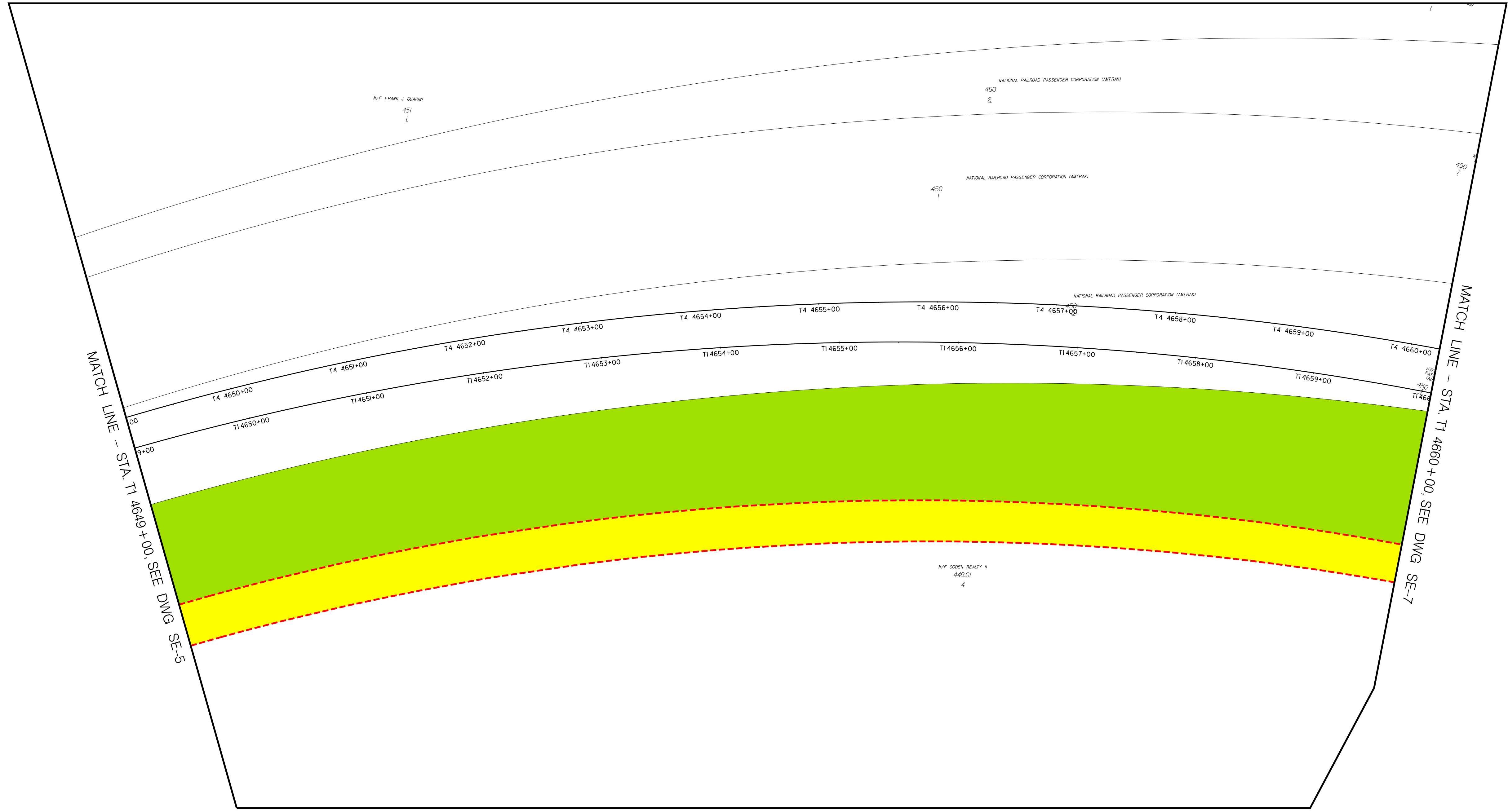
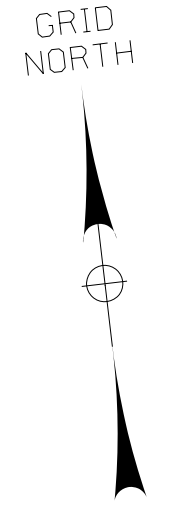
P:\A\PROJECTS\102-IPR\SYD-COM-PW-SE\81554\DOCUMENTS\AMTRAK-HUDSON\NYCN\187738A-1\OTHER PROJECTS\WORKING\STV-INC\EASEMENT-STUDY\ITEM LIB\SURFACE EASEMENT\SE-6.DWG 6/21/16 4:04 PM 6-HUDSON01.TRI SEBEHRM

LEGEND FOR SURFACE EASEMENT

- PROPOSED PERMANENT SURFACE EASEMENT
- PROPOSED TEMPORARY SURFACE EASEMENT
- PREVIOUSLY ACQUIRED PARCEL AREA
- SURFACE EASEMENT (SE)

NEWARK ←

NEW YORK →



MATCH LINE - STA. T1 4649+00, SEE DWG SE-5

MATCH LINE - STA. T1 4660+00, SEE DWG SE-7

PLAN



No.	Revisions	Date	By

Amtrak[®]

This material is owned by and is the sole and exclusive property of the National Railroad Passenger Corporation (Amtrak), Office of Engineering, and is supplied on a confidential basis solely for use in connection with the design and construction of Amtrak facilities and equipment. The reproduction, display, sale or other disposition of this document without the express written consent of the National Railroad Passenger Corporation, Office of Engineering, is prohibited.

Office of Deputy Chief Engineer
STRUCTURES
 National Railroad Passenger Corporation
 30th Street Station, Philadelphia, Pennsylvania 19104

Approved	Date

The Gateway Trans-Hudson Partnership

AZCOM **WSP** **PARSONS BRINCKERHOFF** **STV** **100 Years**

HUDSON TUNNEL PROJECT
PRELIMINARY ENGINEERING
 FROM STA. T1 4649+00 TO T1 4660+00
 SURFACE EASEMENT LIMIT
 SHEET 6 OF 8
 Designed MS Drawn MS Checked DY Date 05/30/2017

Contract No.	
Sheet No.	OF
Dwg. No.	SE-6

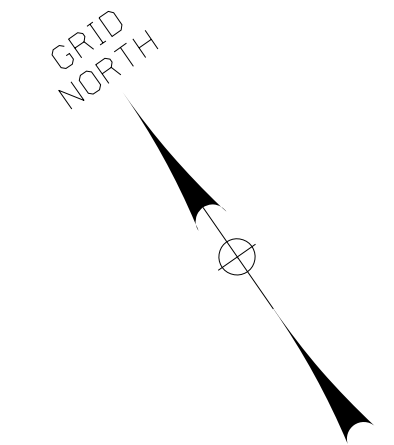
P:\A\PROJECTS\102-PPSVC-COM\PI\SERIALS\DOCUMENTS\AMTRAK-HUDSON\NY\NYC\1187738A-1\0189-PROJECT\XWORKING\STV-INC\EASEMENT-STUDY\TDM-TBS\SURFACE-EASEMENT\SSHEEP\7-DWG-12-16-23-EM-6-HUDSON01-TBL-SE-7.DWG

LEGEND FOR SURFACE EASEMENT

- PROPOSED PERMANENT SURFACE EASEMENT
- PROPOSED TEMPORARY SURFACE EASEMENT
- PREVIOUSLY ACQUIRED PARCEL AREA
- SURFACE EASEMENT (SE)

NEWARK ←

NEW YORK →



MATCH LINE - SEE DWG SE-8

PLAN



No.	Revisions	Date	By

Amtrak®

This material is owned by and is the sole and exclusive property of the National Railroad Passenger Corporation (Amtrak), Office of Engineering, and is supplied on a confidential basis solely for use in connection with the design and construction of Amtrak facilities and equipment. The reproduction, display, sale or other disposition of this document without the express written consent of the National Railroad Passenger Corporation, Office of Engineering, is prohibited.

Office of Deputy Chief Engineer
STRUCTURES
 National Railroad Passenger Corporation
 30th Street Station, Philadelphia, Pennsylvania 19104

Approved	Date

The Gateway Trans-Hudson Partnership

AZCOM **WSP** **PARSONS BRINCKERHOFF** **STV** **100**

HUDSON TUNNEL PROJECT
PRELIMINARY ENGINEERING
 FROM STA. T1 4660+00 TO T1 4672+00
SURFACE EASEMENT LIMIT
 SHEET 7 OF 8

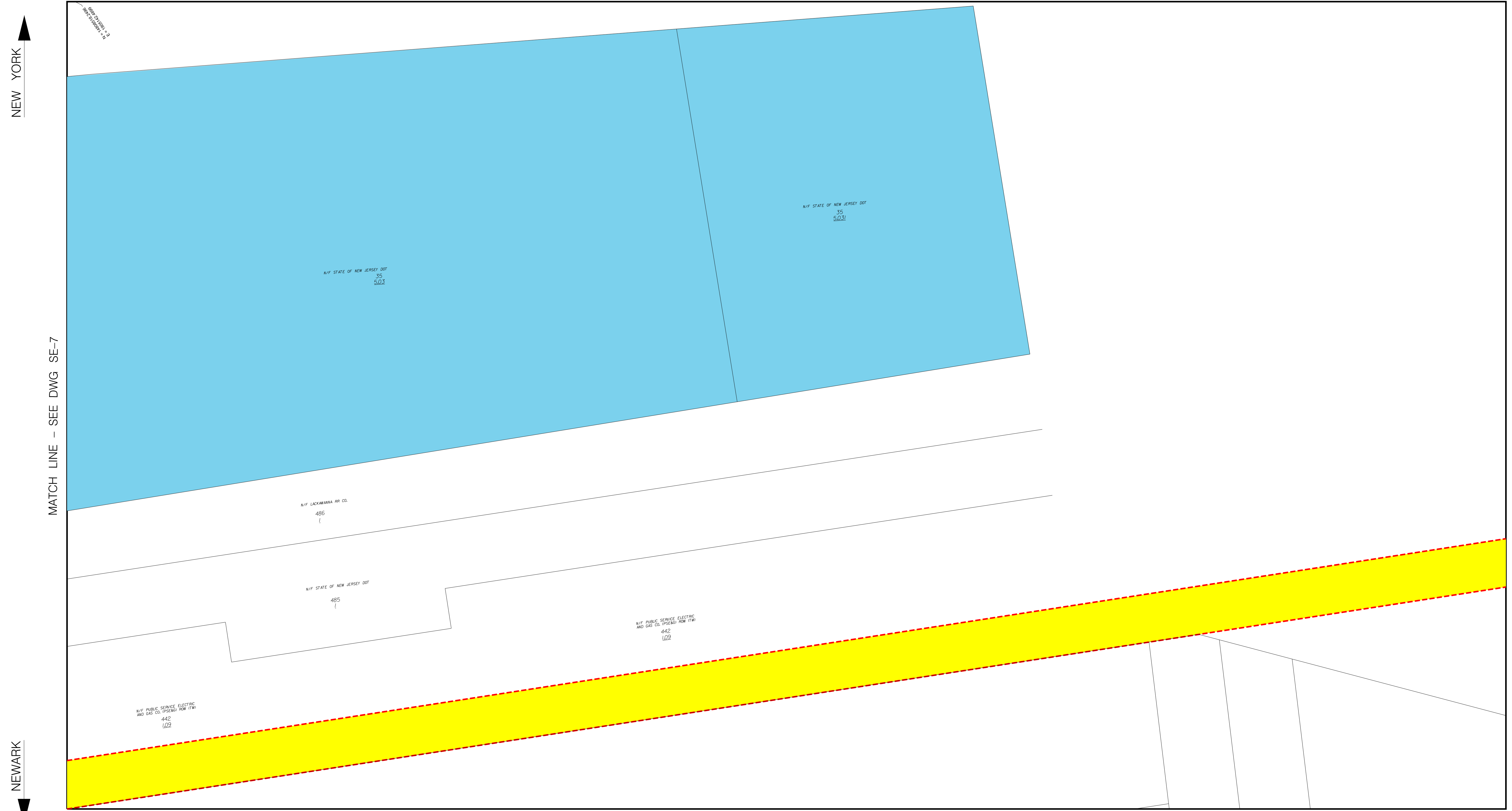
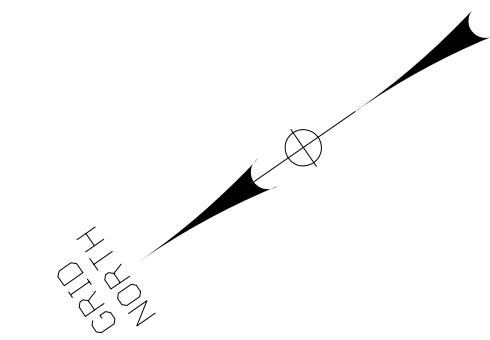
Designed MS Drawn MS Checked DY Date 05/30/2017

Contract No.	
Sheet No.	OF
Dwg. No.	SE-7

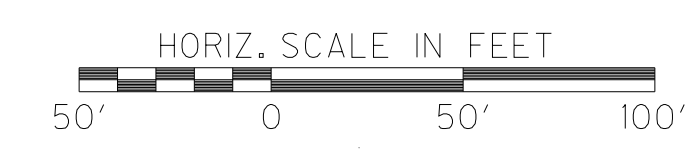
P:\A\PROJECTS\102-PPSVC-COM-PW-SE\1554\DOCUMENTS\AMTRAK-HUDSON\NYCN\187738A-1\OTHER-PROJECTS\WORKING\STV-INC\EASEMENT-STUDY\EASEMENT-STUDY-1\DWG-1\187738A-1-01.DWG 12-09-07 PM 4:00:00 PM

LEGEND FOR SURFACE EASEMENT

- PROPOSED PERMANENT SURFACE EASEMENT
- PROPOSED TEMPORARY SURFACE EASEMENT
- PREVIOUSLY ACQUIRED PARCEL AREA
- SURFACE EASEMENT (SE)



PLAN



No.	Revisions	Date	By

Amtrak®
This material is owned by and is the sole and exclusive property of the National Railroad Passenger Corporation (Amtrak), Office of Engineering, and is supplied on a confidential basis solely for use in connection with the design and construction of Amtrak facilities and equipment. The reproduction, display, sale or other disposition of this document without the express written consent of the National Railroad Passenger Corporation, Office of Engineering, is prohibited.

Office of Deputy Chief Engineer
STRUCTURES
 National Railroad Passenger Corporation
 30th Street Station, Philadelphia, Pennsylvania 19104

Approved	Date

The Gateway Trans-Hudson Partnership
AZCOM **WSP** **PARSONS BRINCKERHOFF** **STV** **100 Years**

HUDSON TUNNEL PROJECT
PRELIMINARY ENGINEERING
 FROM STA. T1 4660+00 TO T1 4672+70
SURFACE EASEMENT LIMIT
 SHEET 8 OF 8
 Designed MS Drawn MS Checked DY Date 05/30/2017

Contract No. _____
 Sheet No. _____ OF _____
 Dwg. No. **SE - 8**